

Ninth Annual Seminar for Judges

24 January 2025



**Correct Coachbuilder
Badge?**





Promotes Ferrari originality and authenticity

- Encourage originality - cannot be replaced and is the gold standard
- Encourage authenticity - original materials together with craftsmanship that embodies the attributes of the original
- Continually learn and refine the guidelines as the knowledge base of Ferrari attributes grows.
- Continually improve judging quality and consistency
- Research, collaborate, and share information on Ferraris

Recent IAC/PFA Decisions

- IAC/PFA is an independent council of about 20 Ferrari experts who establish rules and guidelines for judging

- Primary objectives:

- Encourage originality and authenticity of Ferraris
- Provide general guidance and specific rules where needed
- Communicate to the Ferrari community

David Eichenbaum: Chairman of the International Advisory Council for the Preservation of the Ferrari Automobile (IAC/PFA)

IAC/PFA Decision 13 in General Judging 28 January 2024

Past Decision:

Race cars or Salon cars should be restored to a particular point in time and should have all the equipment that was installed on the car at that time. Note: some Salon cars received special treatment or modification for display after initially rolling out of the factory and we judge them in the specific Salon configuration. (The owner should supply documentation).

New Decision:

Road Ferraris should be judged as-built and may include factory options available at the time of manufacture. Additional safety items such as period seat belts and mirrors are acceptable. The owner is expected to document the as-built configuration. OEM accessories as specified elsewhere in the Decisions are acceptable.

Competition Ferraris should be judged as they left the factory OR as restored to a point in time, such as a particular race. The color and livery should match the point in time. Complete documentation is expected.

IAC/PFA Decision 6 in Exterior Judging 28 January 2024

Past Decision:

Cars may be painted using any color appropriate to the period. In questionable cases, the owner must show documentation. It is not required that an original Ferrari color be used.

New Decision:

Cars may be painted using any color appropriate to the period. It is not required that an original Ferrari color be used. The exception to this rule is for cars that are believed to have been delivered by the factory in only one color, such as the F40 and 288 GTO.

Should an exception arise, the owner must document the color of the car as delivered.

The Endless Improvement Cycle – *a Team Effort*

1. Owner is educated on value of preserving originality and authenticity
2. Owner AND Restorer together seek to maintain originality & authenticity
3. Judging provides feedback to owner / restorer.
4. Cycle continues to improve authenticity & maintain originality

... a team effort by people who care about Ferraris

Judging Quality is Essential

The quality of the judging is directly related to your team's knowledge of the cars you judge.

Preparation before the show is essential – you cannot “wing it”

*You must **KNOW** what is correct --
Otherwise, you are just looking at cosmetics*

Entrant Expectations from Judging

- **Consistency achieved using:**
 - **Judging Guidelines, deduction guidelines, list of prior decisions, and training. Technical competence.**
- **Fairness**
 - **Platino for achieving a standard of excellence – allows flexibility**
 - **Major awards process is thorough and fair.**
- **Feedback of results to the entrant**
- **Show courtesy, appreciation, and respect for entrants and their cars.**
 - **Listen to the entrant.**
- **Entrants should have fun and feel their car was fairly judged.**

Follow the Standard Judging Field Protocol

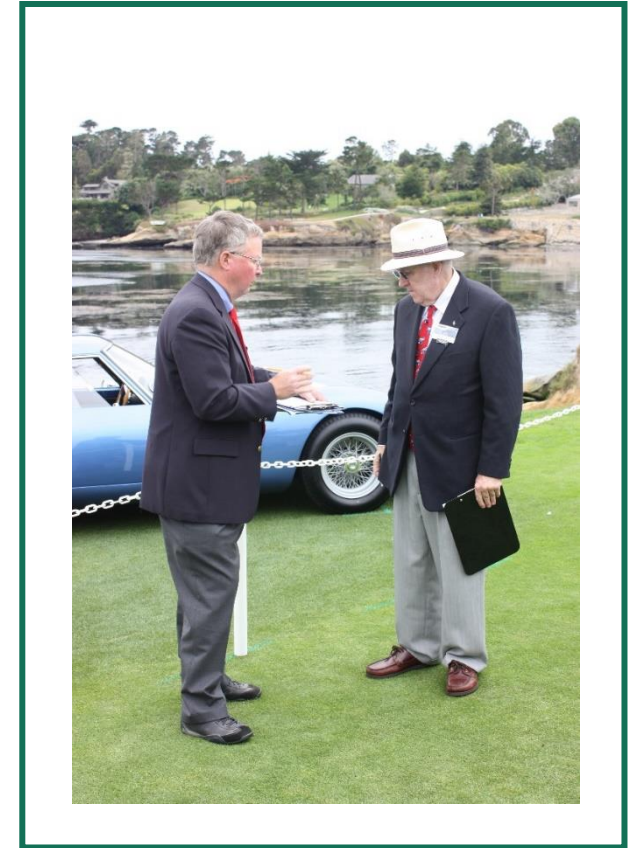
- 1. Introduce team. Thank the owner.**
- 2. Give opportunity for owner to speak – what is special/unusual? Documentation?**
- 3. Walk around car while closed**
- 4. Ask owner to open car doors, hood, trunk**
- 5. Begin judging by area**
- 6. Owner start engine – team conduct operability checks – judges front and rear**
- 7. Interior judge directs operation of car. Use hand signals**
- 8. Owner stop engine; inform entrant of any failures (if any)**
- 9. Complete judging, inform entrant of operational failures (if any).**
- 10. Thank the owner for bringing car**
- 11. Team withdraw to compare notes / agree on score.**

Keeping on Time – *preparation is key!*

- Equal time - no more than 15-20 minutes per car – regardless of the number of cars
- Designate one person to keep time.

Example: If you have 7 cars in your class,
how much time do you have?

5 minutes - walk out, 7 x 20 minutes/car = 140 minutes, 5 minutes - walk back, 20 minutes to consolidate scores. 170 minutes < 3 hours



*What happens when you
get behind*

So, why does it take over 3 hours to judge 4 cars? Judges not prepared?

From Score Sheets -- Missing/Incorrect Information

From the Notes	Deduction
<i>A/C not cold</i>	- ½ S/B 0 (flow test only)
<i>Carpet pile too thick</i>	- 1 S/B ½ (per guidelines)
<i>Missing pouch</i>	No deduction – no explanation
<i>Wear on edge of paddles (shifter)</i>	- ½ Cosmetic desperation?
<i>Exhaust tip NOR (on 599)</i>	No deduction. Why not?
Both tail lights loose, taped up	- ½ S/B ½ point for each
<i>Incorrect speedometer</i>	- ½ S/B -1 (per guidelines)
<i>License plate light INOP. No rear lights.</i>	No deductions. Why not?
<i>Fog lights not operational</i>	No deduction. Why not?

What is happening?

The Law of Judging Proportionality

**Use the Guidance on Suggested Deductions,
moderated by sense of overall Proportionality**

A	HEADLINER	2
B	UPHOLSTERY Seats, Console, Door & Shelf Panels	4
C	CARPET Pedals & Shifter	3
D	DASHBOARD Instruments & Components Condition	3
E	STEERING WHEEL, Levers, Controls, Column	2
F	TRIM & EMBLEMS	2
G	TRUNK Carpet, Paint, Decals, Hardware Originality	2
H	TOOLS, Spare, Manual, Pouch, Jack, Window crank	4

- **“Paint” is 3 points** - if no paint (primer), then it is a 3 point deduction. If 6 minor flaws (- ½ each), but overall paint is not bad, should you take off 3 points?
- **“Glass” is 2 points** – if missing all glass, take off 2 points. If significant delamination (- ½), scratch in a side window (- 1/2) and minor chip in the windshield (- ½). Should you take off 1 ½ points?
- **“Cooling system” is 3 points** – if the coolant tank cap is NOR (- ½), two clamps are NOR (- 1), and missing a sticker (-1/2). Should you take off 2 points?
- **“Tools” 4 points** – if 3 missing/incorrect tools, should you take off 3 of the 4 points? See Guidance on deductions.

Routine Replacement Items

Spark plugs, filters, battery, window glass, exhausts, rubber wiper blades, water hoses, brake hoses and tires. Must “conform to the general appearance, characteristics, and size of the original”.

Glass: does not have to be original nor have the “bug”

Hoses and accessory belts: proper materials similar to originals. Remove brand names.

Exhaust – must have correct look of an original (older cars)

Tires – correct size/profile

Distributor caps – must be correct color and close to original

Battery – make an effort. No orange or green batteries

Factory authorized replacement – fit and function. Include documentation.

STICKERS – do not disguise



BATTERY



HOSES

NOT ACCEPTABLE IF NON-ORIGINAL COMPONENT

ACCEPTABLE IF ON ORIGINAL

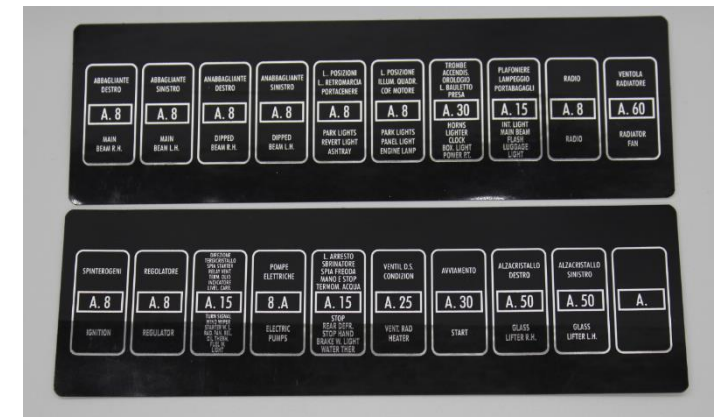
BORRANI WHEELS



BRAKE BOOSTER



FUSE BOX



What If an Operational Check Fails During Judging?

If there is a malfunction of any kind, the owner or representative will be given a chance to correct the fault while the next car in the class is being judged.

What do you do?

1. Inform the person showing the car of the problem.
2. Complete judging the car.
3. Inform the person showing the car they have the time it takes to judge the next car – about 15-20 minutes. Annotate the judging sheet.
4. If the item is fixed, and verified, ensure the deficiency is erased from the judging sheet.

Why are we talking about this again?

YOU MUST PREPARE TO JUDGE YOUR CARS

A checklist is a great help to list what you expect to see.

Such as exhausts, *tools/manual, wheels/tires, badging, etc. Plus, authorized options*

It is unfair to owners who have taken the time, effort and expense to prepare the car - and not prepare yourself.

Individual Judge Preparations

1. Research from various sources. New car? Older car?
What are the possible reference sources? IACPFA.org and FCA web sites
2. Review the judging references:
 - Judging Guidelines, Guidance for Deductions, Past IAC/PFA decisions, Replacement Items.
 - *New Judges take an open book quiz while they are U/I*
3. Make a checklist to guide your judging on the field
 - Make efficient use of limited judging time.
 - Focus on certain items/areas
 - Learn from previous judging – know historical weak areas

Judging Preparations – what we see in Judging Teams

It is obvious what teams are prepared and those not

- Chief Class Judges are the key to good IAC/PFA judging. You are the leader of the team and you set the tone. But some don't . . .
- Set expectations in advance.
- Set judging assignment in advance.
- Don't review the recent IAC/PFA Decisions.
- Share research within team.
- No discussion of major awards to support. Or special factors.

The CCJ should be actively leading their team

RESEARCH for 430 and NEWER

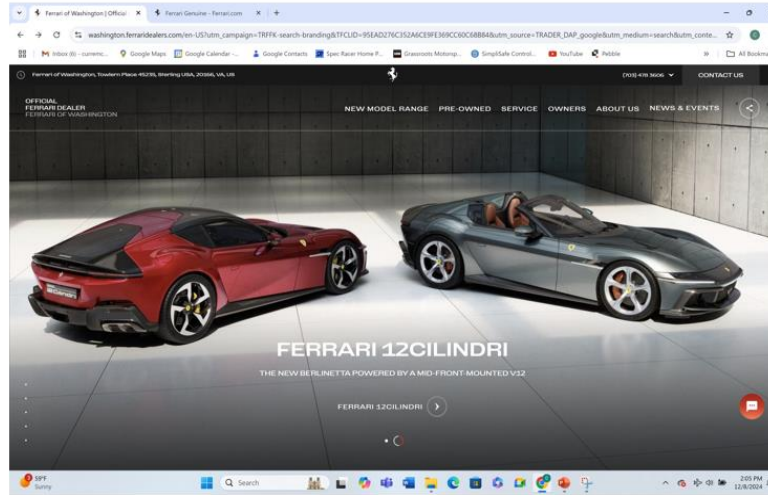
1. Review VIN information
2. Build sheet, order documentation. What is on the car. Ferrari dealers can help.
3. Know what Genuine Accessories could be on the car.

Judging OEM As-Delivered and Post Production Accessories – *430 and newer*

- **As Delivered** Must have factory documentation to validate the as-delivered configuration (build sheets, order documentation, window stickers)
- **Post Production**. We accept OEM accessories that are model specific which are Ferrari Genuine and have a Ferrari part number. Documentation of their authenticity is listed in specific year/model OEM accessory catalogs / Ferrari web site.

Finding What is Correct

Start on Ferrari web site

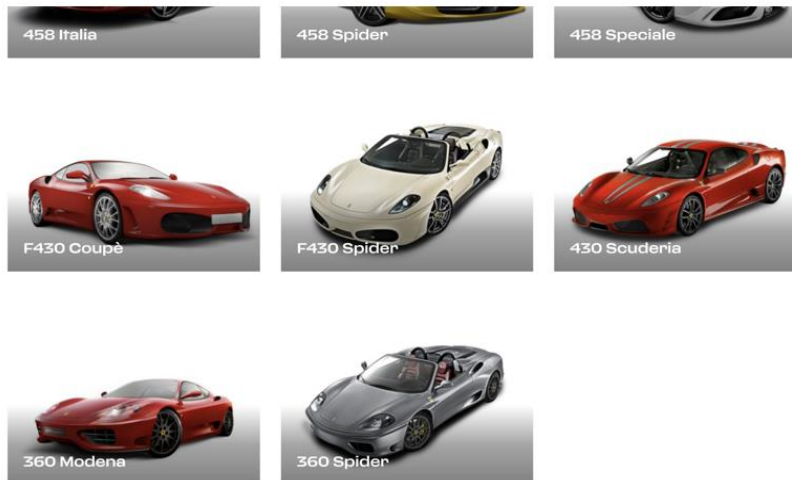


Then Select "OWNERS"

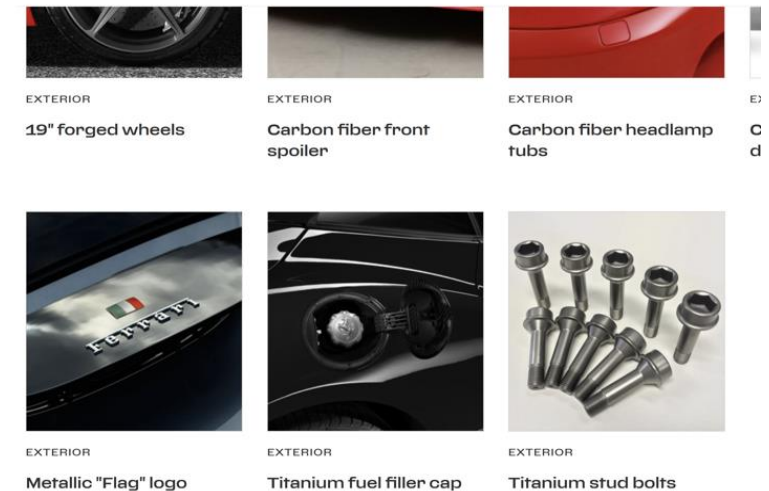
Then "Ferrari Genuine"

Then "Go to Catalog"

Select 6, 8,
12 cylinders
- And model



These are
Authorized/
Genuine
accessories



Acceptable Options from Ferrari web site

F430 Coupe example



EXTERIOR

Carbon fiber headlamp
tubs



EXTERIOR

Carbon fiber mirrors



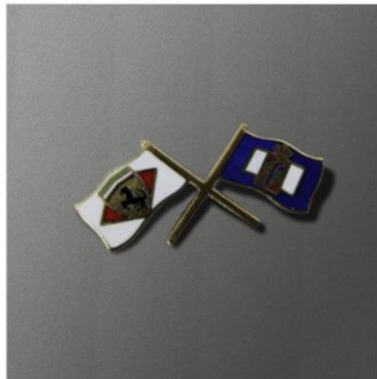
EXTERIOR

Carbon fiber rear
bumper strip



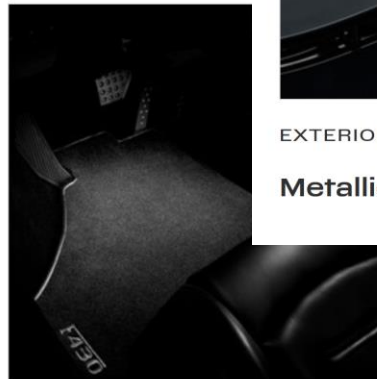
INTERIORS

Carbon fiber overmats



INTERIORS

Ferrari & Pininfarina
logo



INTERIORS

Overmats with vehicle
logo



EXTERIOR

Metallic "Flag" logo



EXTERIOR

Titanium fuel filler cap



EXTERIOR

Titanium stud bolts

***Know this information before
judging***

Research for Older Cars

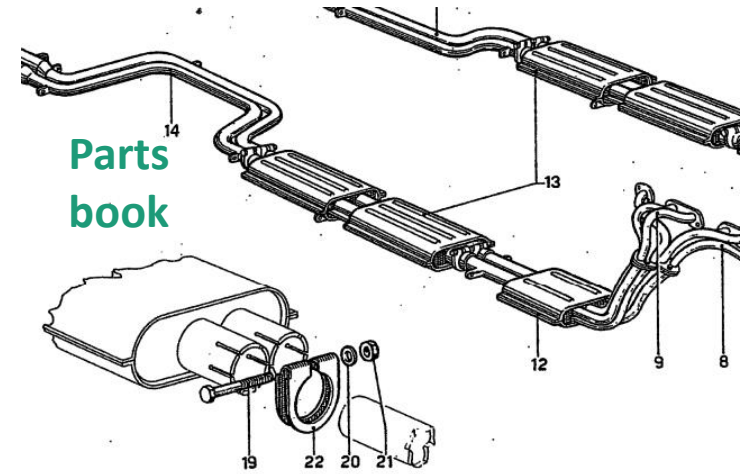
- Parts books, owner's manual, build sheet
- FCA and IAC/PFA web sites
- Research by serial number – e.g. Build sheets
- As built manuals (few)
- Provenance materials – pictures, history, etc. - from owner/restorer

If you are not knowledgeable of the cars you are judging, you are looking at cosmetics. Not fair to the entrants

Research and Judging Checklist

It is a list of what you expect to see on every car --

- Tire size, wheel size, model, knock offs
- Exhaust style – Ansa, Cerritti, etc. New cars w/ aftermarket
- Tools, spare tire, manuals
- Carpets
- Badges
- Instruments
- Typical weak points on this model
- Expected documentation (Modus, build sheets, original pictures), owners manual, parts book, etc.

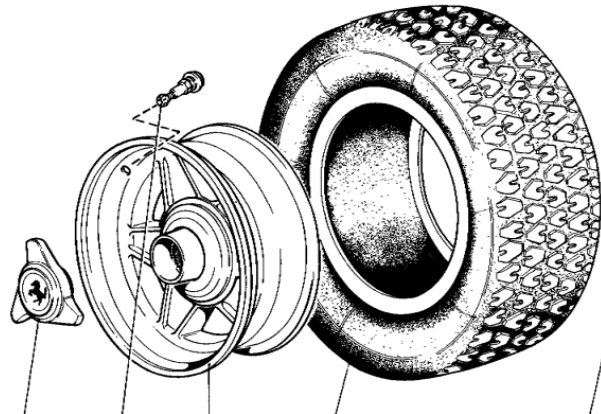


FCA web site



Owners manual.

Parts book



7" J x 16"		
8" J x 16"		
GOODYEAR EAGLE 205/55 ZR 16" N.O.	MICHELIN MXW 205/55 ZR 16"	PIRELLI P700 205/55 ZR 16" (1)
GOODYEAR EAGLE 225/50 ZR 16" N.O.	MICHELIN MXW 225/50 ZR 16"	PIRELLI P700 225/50 ZR 16" (1)

Research and Judging Checklist – example (*Wetmore*)

What to Inspect	What to Expect	What I Saw
Seat Upholstery Material	Blue Vinyl side bolsters - Blue canvas	
Seat Cushion Pleat Count	Ten total?	
Seat Backrest Pleat Count	Ten total?	
Seat Fastener type	Hex bolts	
Firewall/ Kick Panel upholstery	None - Expect black paint	
Floor carpeting type	None - Front of footbox may be black or silver	
Transmission tunnel color	Black - make sure it has the rubber boot for the shift lever tower - Should be gasketed with a vinyl welt cord	
Dash Panel finish	Black Wrinkle paint - secured with slotted pan head sheet metal screws	
Instruments	GTO Spec - Veglia	
Air control handles	Three red bank	

Research and Judging Checklist – (*Gardenhour*)

ENGINE AND CHASSIS

	Problem areas on 330 GTC/GTS	Should Be
1	Cam cover and heat shield	The cam covers and exhaust header heat shields should be black crinkle paint. The Ferrari name should be the same color and texture as the cam cover. Heat shield secured with black oxide Lobo bolts and flat washers
2	Carburetors and throttle shaft bearing	Should be four black oxide nuts and wave washers mounting each carburetor to the manifold. Black oxide nuts and washers retain throttle bell crank bearings.
3	Carburetor choke wire	Solid wire connecting the carburetors choke mechanisms. The wire is terminated in a square shape at the front carburetor.
4	Air filter breather hose and clamp	The filter breather hoses on the PVC systems should be semi clear or transparent green polyurethane tubing retained with black oxide Corbin spring clamps. Heat and age may alter the color of the tubing. Angst clamps have been seen on later cars.
5	Cheney clamps	Cheney clamps should be used for all hoses except for the heater water hose, radiator overflow hose, air filter breather hose, and the hydraulic fluid hoses from brake and clutch master cylinders.
6	Water heater hose and clamps	Water heater hoses are cloth covered or cloth covered appearance, secured with Copiglia band clamps. No printed "as made by logos" on the hose. If stickers are on the hose, should be Safta Calore sticker, not Pirelli
7	Steering column	Steering column painted satin black up to the U-joint. The U-joint should have a raw case hardened steel finish (may be clear coated to preserve finish), the

Research & and Judging Checklist – example (Gardenhour)



9) Bonaldi system

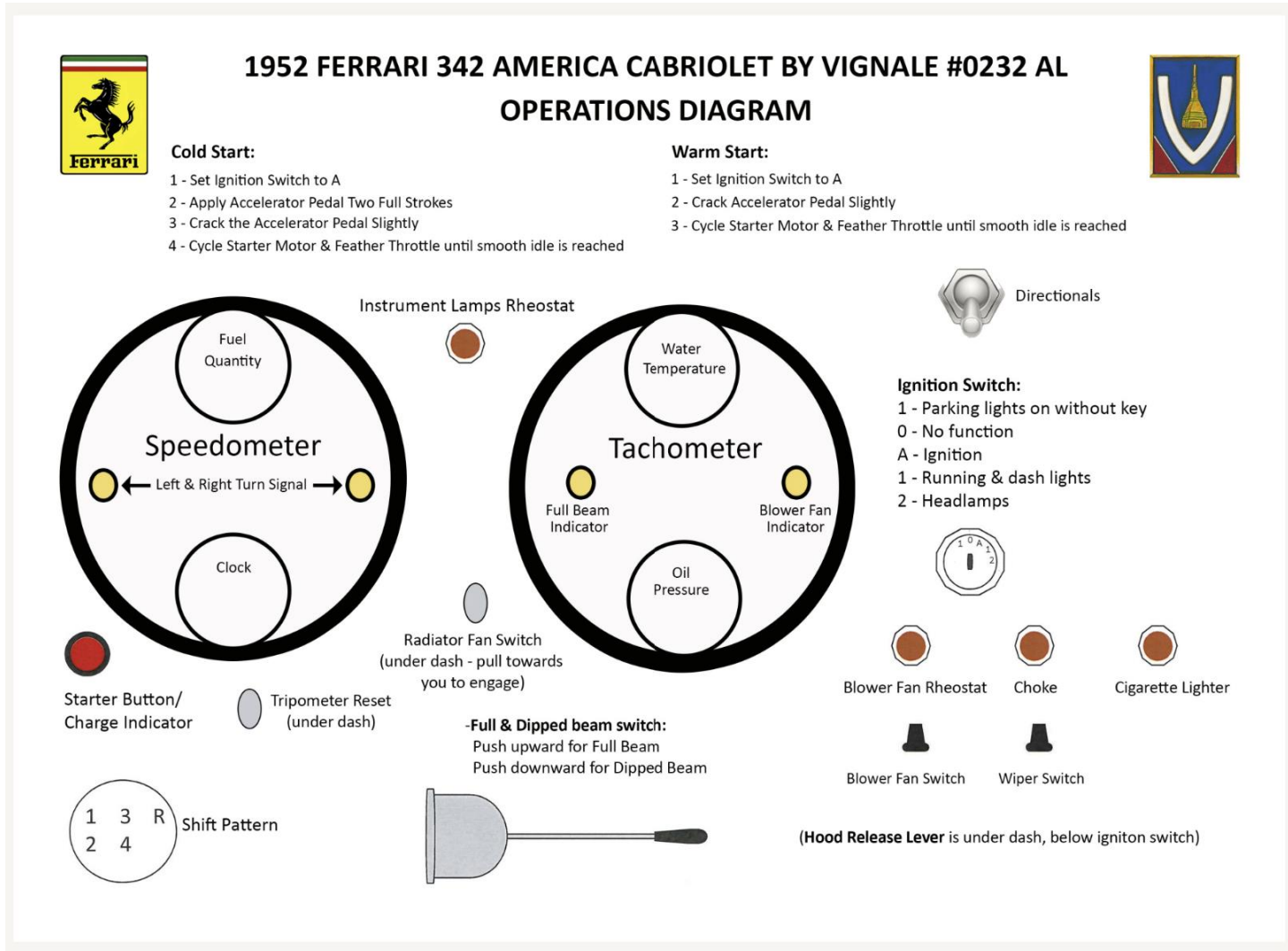


10) Engine bay surround molding



11) Alternator junction box

Operating the Car – Interior Judge Checklist



You need this to check the operation of an older Ferrari.

**But same for newer cars.
Where do you find it?**

Judging Race Cars – authentic purpose-built competition Ferrari

Owners must provide documentation describing the race configuration

- Judged in the configuration as they left the factory, OR to a particular race, OR as raced in the series for which they were/are intended.
 - Older race cars:
 - As they left the factory, OR
 - As they raced in period – owner must document
 - Newer race cars (examples):
 - As they left the factory, and with sanctioning body requirements
 - Ferrari Challenge Series; 360 N-GT (*FIA, ALMS, LeMans*); 360 GT (*FIA, ALMS, Le Mans, Grand Am*);
 - SCCA

Revised Feedback from Chief Class Judge to Entrants

Cavallino Classic 34 January 25 2025 Rev: Dec 2024

Chief Class Judge: _____



CCJ Provide to entrants only

- Standard / professional looking feedback
- People keep for their records
- With good notes (of course).
- No points in feedback

Class:		Entrant:		Chassis:	
EXTERIOR		INTERIOR		ENGINE & CHASSIS	
A	COACHWORK, BODY & FENDERS	A	INTERIOR TOP & HEADLINER	A	CORRECT ENGINE TYPE
B	DOORS, HOOD, TRUNK	B	UPHOLSTERY (SEATS, DOORS)	B	CORRECT ENGINE SERIAL NUMBER
C	TOP CONDITION	C	CARPETS, PEDALS, SHIFTER	C	ENGINE, TRANSMISSION, AUXILIARIES
D	PAINT	D	DASHBOARD INSTRUMENTS	D	FLUID LINES (OIL, FUEL, WATER + LEAKS
E	PLATING	E	STEERING WHEEL & CONTROLS	E	ELECTRICAL SYS BATT & COMPONENTS)
F	LIGHTS, TYPE & FITTINGS	F	TRIM & EMBLEMS	F	COOLING SYSTEM
G	TRIM & EMBLEMS	G	TRUNK (CARPET, HARDWARE,)	G	FUEL SYSTEM (CARBS, INJECTION, LINKS)
H	GLASS, PLEXIGLASS	H	TOOLS, SPARE, MANUAL, JACK)	H	UNDERSIDE (FENDERS AND FRAME)
I	RUBBER & WINDOW FELT	I	WINDOWS (SIDE, VENT, REAR)	I	CHASSIS (BRAKES, SUSPENSION)
J	WHEELS & TIRES	J	INSTRUMENT OPERATION & LIGHTS	J	EXHAUST SYSTEM
		K	EXTERIOR LIGHT OPERATION	K	ENGINE OPERATION & COMPARTMENT

Judges Comments:

EXTERIOR:



INTERIOR:

ENGINE & CHASSIS:

Major Awards Process

Selecting Major Awards by Chief Class Judges

Scenario: Four Platino winners are eligible for one award: "Finest 8-cylinder Ferrari"

		<u><i>Special Factors (provenance)</i></u>
1986	328 GTS	
1987	355 Challenge	- <i>Rarity</i>
		- <i>Historical significance</i>
		- <i>Engineering / Design significance</i>
1988	GTB Turbo	- <i>Difficulty of restoration</i>
		- <i>Elegance or presence</i>
1988	F40	- <i>Over restoration (negative)</i>

The chief class judge/team must be knowledgeable of these factors for his class BEFORE the show.

Example Use of special Factors

(numbers are
for illustration)

Use 1-5

	328GTS	355 CHALLENGE	GTB TURBO	F40
RARITY	1	3	5	4
HISTORICAL SIGNIFICANCE	2	3	5	5
ENGINEERING/DESIGN SIGNIFICANCE	1	1	3	4
DIFFICULT OF RESTORATION	1	1	3	1
ELEGANCE OR PRESENCE	2	2	2	4
OVER RESTORATION				- 1/2
	7	10	18	17 1/2

Miscellaneous Items – a reminder

- Give the owner an opportunity to present his car. Anything special / unusual about the car
- Over restoration deduction – whole car by consensus of team (no more 1 point)
- “Minor” paint chips – what is evidence of use and what is degradation?
- Tool kits – what could have come with car; don’t be dogmatic
- Look at books/manuals and tool kits. Good repros ok.
- Equal time for every car – *More time judging = more deductions. Fair?*
- Questionable originality – if unsure ask. If unresolved, make a note - but no deduction

When Is a Platinum a Platinum – or Not?

A Raw score of 96 ½ and 97 points is a very fine distinction between Platinum and not Platinum

Step 1: Compare and agree on individual deductions within team. Should you adjust an individual mark up or down? Ensure consistent scoring.

Step 2: Take the holistic view of the car. Is this car really a Platino or not?

Be objective, not sympathetic. Our credibility depends upon fairness.

**Thank you for attending the 9th annual Seminar
for Judges.**

The quality of our IAC/PFA judging is improving!

Thus - improving the 'breed'

Questions??

BACKUPS

Use only previous charts

More from Your Score Sheets

From the Notes	Deduction
<i>Horn button crazed</i>	- ½ (functional, replace an original?)
<i>Valve stems dirty & light corrosion</i>	- ½ (must be a near perfect Ferrari)
<i>Valve stems. Wheel scrapes of rear rim</i>	- 1 ½ (max. 3). S/B ? valve stems wrong ???
<i>Wear on edge of paddles (shifter)</i>	- ½ (evidence of being driven??)
<i>Missing Dealer Network Manual</i>	- ½ S/B 0. (Not required by Guidelines)
Blank	- 1 (under Engine Operation) for what?
<i>Sticker in engine compartment Emissions</i>	- ½ Missing, wrong ????
<i>Finish on aluminum wrong</i>	- ½ Marked on wrong car
<i>Exhaust tip NOR (on 599)</i>	No deduction. Why not????
<i>Incorrect speedometer</i>	- ½ S/B - 1

Summary – food for thought

- The Platino award has become a widely sought measure of excellence in Ferrari automobiles.
- The IAC/PFA and judging teams are what give credibility to the Platino award.

Are we doing as well as the reputation of the award?

Judging Example to Avoid -- "write to read"

Abbreviations: Should Be (SB _____) Not Original (NOR Condition, design, craftsmanship, materials, finish, etc.) Inoperative (INOP)

	Name / Serial number	Comments
①	NICOLO 7447	crow on crown nut in water at top is missing, cut part of original, wrong exh tips, steering wheel is wrong has spots showing DC, carbon engine hat loop, idle
②	EISENBERG 7785	finish on RH distributor drive, alternator wiring attachment is modified, battery is too low, minor oil leak on LH bracket, missing cap nut in chain tensioner, missing mounts, no shield on exh course wrinkle on exh
③	HEFFERNAN NO SIDE PLATE	
④	LOTMAN 8011	finish on distributors - too shiny, exh bolts in case should have heads to front, nuts to rear
⑤	LOGANBULL 7977	After side mirror, mirror & cups + nicks on wheels, waste, muffler hangers, wrong type, wrong size wrong size battery, missing cap on chain tensioner, wrinkle paint too big, no side large size hole clamps wrong, inside compartment has numerous rust, anti-rust, anti-rust lead ↓ ↓
⑥	RAISBECK 8621	
⑦	FRANCIS 9713	Run ^{for lead} front pins should be red; LH side after cen cover - missing piece at rear, modern flasher unit flora out of adjustment, right, connectors (yellow - big ones) green light + auto plus lights don't work photo label
⑧	NEWMAN 9737	FIAMM horns, wrong color - silver instead of "red" horns
⑨	MACNEIL 9993	After production wheels, no deduction, rust from water below steering box, engine runs rough or sputter fuel line, fuel lines to short, plating on servo + roller arm top too bright + wrong color no shield on exh + wrong tips

What feedback do you provide?

The judge should rewrite / return to the Chief Class Judge and Chief Judge

Research and Judging Checklist for “Replacement Items”

- Spark plugs
- Filters
- Battery
- Window glass
- Exhaust system (but, should be correct likeness of original)
- Rubber wiper blades – but arms must be correct
- Water hoses – reasonable facsimile acceptable
- Brake hoses
- Fuel lines – reasonable facsimile of original acceptable
- Tires – but must be correct size
- Does this need to expand?

From Judging Guidelines: “ . . . Need not be the exact original brand or type provided that replacements conform to the general appearance, characteristics, and size of the original. Tires with the correct profile should be fitted to the original rims . . . ”

Judging Question:

Situation: You are the chief class judge and the owner has requested feedback on his car.

Scoresheet notes state:

- *Hood struts*
- *Valve stems*
- *Tubi exhaust*
- *Marker lights*
- *Line from air pump*

What feedback do you provide?