

As-Built Checklist for Ferrari 330 GTC/GTS

This list identifies important items that need to be present to meet 330 GTC/GTS original build configuration when the car left the factory. This list is not intended to identify all the areas that are observed during the IAC/PFA judging process. Additional original build configuration details are described in the 330 GTC/GTS As-Built Configuration and Judging Notes Document, Version 8.0, July 2023. However, it is possible that a car may have been built with variations of the items as described in this list and should be documented in the cars factory build sheet. **There is no assurance that constructing a car as defined in this document will result in an award at a judged Concours event.**

Version 9 Feb 2025

EXTERIOR

	Item	Should Be
1	Rubber boot over front running/turn signal light	Black rubber boot with wires protruding from the top of the boot
2	Protective Pan under radiator	Fiberglass pan under radiator painted satin black
3	Molding on pinch weld under trunk area	Rubber molding with approx. 35 very- fine rubber ridges terminated with a stainless clip and flathead Philips machine screw
4	Windshield wipers	Windshield wipers were wire formed frames made by Lucas or Carello
5	Rubber weather strip molding at bottom of windshield pillar	Specially shaped black rubber seal piece at the bottom of the windshield pillar held in place to the body with 3/32 pop rivets with flat washers visible under the pop rivet.
6	Mounting front running lights and rear backup lights	Lights are mounted with chrome, truss head, slotted machine screws
7	Hood, door, and trunk panel gaps and fit, condition of paint, chrome, and glass	Body gaps should be even and aligned, chrome not dented or degraded, rubber seals not cracked or torn, paint chips on nose acceptable

INTERIOR

	Item	Should Be
1	Headliner and trim (only GTC)	Headliner, sun visor and all trim pieces above window level should be cream colored. Black vinyl on rear parcel shelf, windshield pillar, B pillar, center console, dash, and arm rest, independent of seat and door panel color.
2	Sun visor and rearview mirror(only GTC)	The sun visors are heat sealed along the edge, not sewn. White rubber tips on sun visor arm, a day/night lever on bottom of rearview mirror.
3	Rear parcel shelf(only GTC)	The rear parcel shelf should be covered in black vinyl with a punched hole pattern for speakers (with or without radio). The gas lever release knob is fan shaped with surround bezel. Early cars may not have the bezel.
4	Trim on front of the doors	Early cars had rubber molding trim; later cars had chrome trim.
5	Door striker bracket	Door striker bracket (CAD) is mounted with two CAD plated, flat, Allen head machine screws, not Phillips head screws.
6	Floor heel mats	Driver and passenger heel mats should be black rubber with a small basket weave pattern. Should not be a heel mat on the firewall on passenger side.
7	Emergency window crank	Emergency window crank uses an access hole in the door panel to operate the window lift mechanism. Usually stored in the glove box.
8	Luggage straps (only GTC)	Two leather luggage straps attached to the rear parcel shelf and luggage shelf bottom with chrome footman brackets. The straps are black leather on the

		front side of the strap and a tan color on the back side, independent of the interior leather colors . The belt buckles should be nickel plated, not chrome plated.
10	Seatback rest stop (only GTC)	Rubber stop for seatback to rest on. Shape may vary from picture.
11	Tools	Tool bags (1 or 2 bags) with period correct tools. Early cars may have had one tool bag with many more tools and later cars had 2 tool bags with a reduced set of tools. Tools should be period correct.
12	Jack and manuals	Battaini jack painted blue or yellow, Owner's pouch, Owner's Manual and Parts book (reproductions acceptable)
13	Spare wheel and tire	The spare wheel and tire should match the wheels and tires on the car unless the spare is an original wheel and tire. The spare tire is held in place by a large chrome ring with a T- handled bolt

ENGINE AND CHASSIS

	Item	Should Be
1	Hose clamps	There can be 4 different hose clamps used for water, fuel, vacuum, and fluid lines. Cheney, Copiglia band clamp and black oxide Corbin spring clamp were most commonly used. The Angst clamp was seen in place of the Copiglia and Corbin clamps on some later production cars.
2	Cable ties and screws	Cable ties are metal, no zip ties, twist ties or tape. Pininfarina used oval and flat head Phillips screws. Exceptions are the slotted screws securing the shift gate plate, Allen head securing the door striker, and the truss head screw securing the front running lights and the rear backup lights .
3	Engine bay surround molding	A smooth, dark polypropylene material with a square edge on the top with a rectangular cross section. The molding should not be rubber or cloth covered.
4	Wheels and tires	Two wheel options. 14x7-inch Borrani wire wheel, RW4039, with angled, 3 eared, chrome knockoff with a prancing horse in the center. or 14-inch Campagnolo cast alloy , 10-hole wheel with a straight, square ended, 3 eared chrome knockoff with a prancing horse in the center. Should not be a Borrani logo in the center of the knockoff. Tires should be 205 HR 14 or 205 VR 14
5	Steering Idler	The steering idler assembly cap should be natural bronze with a dark oxidized appearance. The retaining nuts should be silver CAD with yellow inserts.
6	Valve cover and heat shield	The valve covers and exhaust header heat shields should be black crinkle paint. The Ferrari name should be the same color and texture as the valve cover. Heat shield secured with black oxide Lobo bolts and large flat washers.
7	Carburetor mounting and throttle bell crank shaft bearing	Four special black oxide 12mm nuts and wave washers mounting each carburetor to the manifold. Throttle bellcrank bearings painted black crinkle retained with black oxide nuts and washers. Bellcrank rod finish is black oxide.
8	Air filter breather hose and clamp	The filter breather hoses on the PVC systems should be semi clear or transparent green polyurethane tubing retained with black oxide Corbin spring clamps. Heat and age may alter the color of the tubing. Angst clamps have been seen on later cars.

9	Water heater hose and clamps	Water heater hoses are cloth covered or cloth covered appearance, secured with Copiglia band clamps. If stickers are on the hose, should be Safta Calore sticker, not Pirelli.
10	Steering column	The steering column painted satin black up to the U-joint. The U-joint should have a raw, case-hardened, steel finish (may be clear coated to preserve finish), the coupler from the U-joint to the shaft into the steering box should be black oxide, and the shaft into the steering box should be natural steel with a bright finish. Black mechanic's wire should be used to safety wire the black oxide bolts on the U-joint.
11	Brake and Clutch master cylinders, hoses, and clamps	Early cars (prior to around S/N 10000) had a Dunlop brake system with brake booster painted semigloss black, the clutch master cylinder natural aluminum and brake master cylinder CAD plated. Later cars had a Bonaldi brake system with the brake booster plated gold CAD, the clutch master cylinder natural aluminum and the brake master cylinder painted satin black with a CAD plug on the end. <u>Clutch and brake fluid hoses should be smooth rubber secured with black oxide Corbin spring clamps.</u> Later cars had a mechanical clutch, eliminating the clutch fluid reservoir.
12	Alternator wiring junction box	A black plastic electrical wiring junction box mounted on the left side of the engine bay to connect the Lucas alternator wiring.
13	Spark plug wires and routing	2 rubber O-rings and a bracket mounted on the distributor to gather the black, 7 mm, spark plug wires from the distributor, exiting the round, tapered metal distribution tube through rubber grommets. Metal tube should be painted crinkle black.
14	Radiator cap, overflow hose and expansion tank	Silver CAD 2-eared, non-pressure radiator cap, ribbed rubber overflow hose and 5mm Copiglia clamp. Expansion tank painted satin black with two eared, CAD .9 BAR pressure cap. Copiglia clamps on ribbed hoses.
15	Radiator cooling fan motor	Square body Lucas motor painted gray/green hammer tone with natural aluminum or painted black satin, 3 bladed fan.
16	Exhaust system, exhaust tip	Made by Ceretto, Galetti, or Spacem. ANSA decals are not correct for the 330 GTC
17	Fiamm compressor cover	A satin black plastic can houses the Fiamm air compressor in the right side of the front nose
18	Battery cable termination, copper ground strap	A right-angle connector on + and – terminal. + terminal should have a rubber cover. Should be a braided copper ground strap from battery mounting bracket to the engine block
19	Air Conditioning System	York compressor with black, black cloth covered AC hoses terminated with Aeroquip connectors. The preferred finish for the compressor is aluminum.
20	Rust, corrosion, oil, and water leaks	Check for rust, corrosion, oil, and water leaks in the engine bay

EXTERIOR PICTURES



1) Rubber boot covering running light

2) Protective pan under radiator

3) Ribbed molding on trunk pinch weld



4) Wire formed wipers

5) Rubber weather molding

6) chrome truss head screw

INTERIOR PICTURES



1) Head liner and trim

2) Sun visor rubber tips

3) Speaker holes on rear parcel shelf



4) rubber molding on door



4) chrome molding on door



5) door striker , Allen head screws



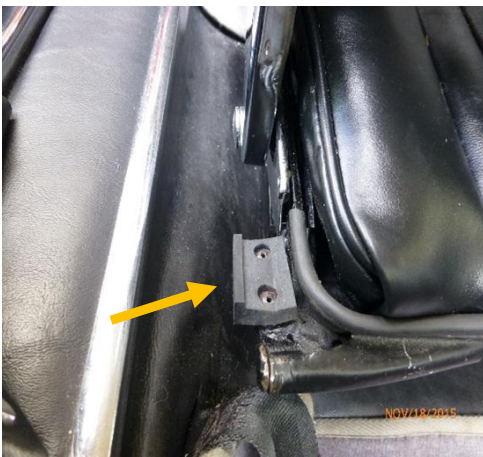
6) Heel pad pattern



7) Emergency window crank



8) Luggage strap



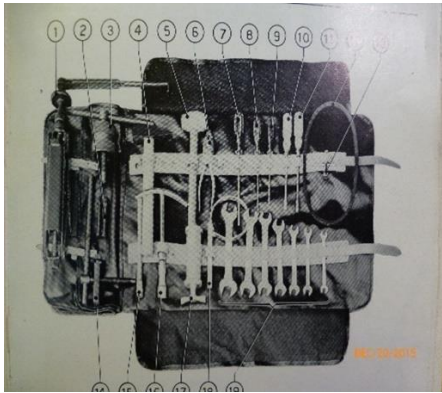
10) Seatback rest stop



11) 2 tool bags



11) example tools for late car



11) Owner's manual picture, early car tools



12) Battaini Jack



12) Owners pouch and manuals

ENGINE AND CHASSIS PICTURES



1) Cheney clamp



1) Copiglia and Corbin clamp



1) Angst clamp



2) Ties, nuts, screws, fiber washer



3) Engine bay surround



4) Boranni wire wheel



4) Campagnolo cast alloy wheel



5) steering idler



6) valve cover and heat shield



7) Carb nuts and bellcrank bearing



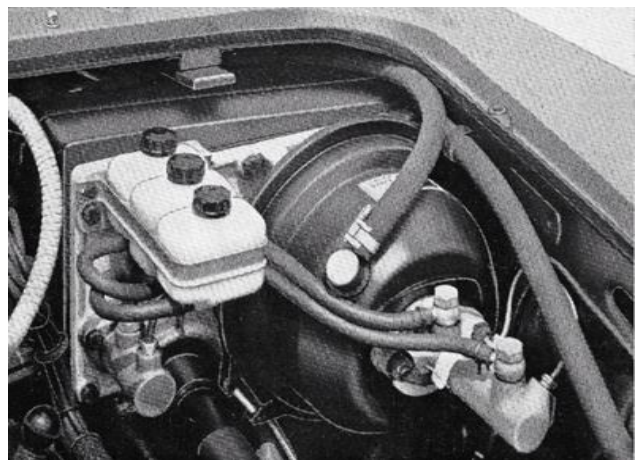
8) Air breather hose and Corbin clamp



9) Water heater hose and Copiglia clamp



10) Steering column



11) Dunlop brake system



11) Bonaldi brake system



12) Alternator junction box



13) Plug wire routing,



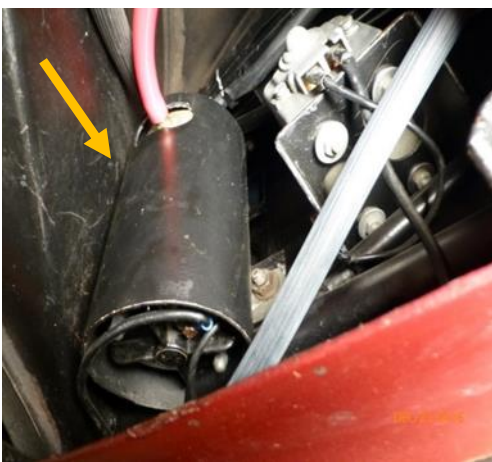
14) Radiator cap, hose, Copgla clamp



15) Lucas square radiator fan motor



16) Ceretto exhaust tip



17) Fiamm compressor cover



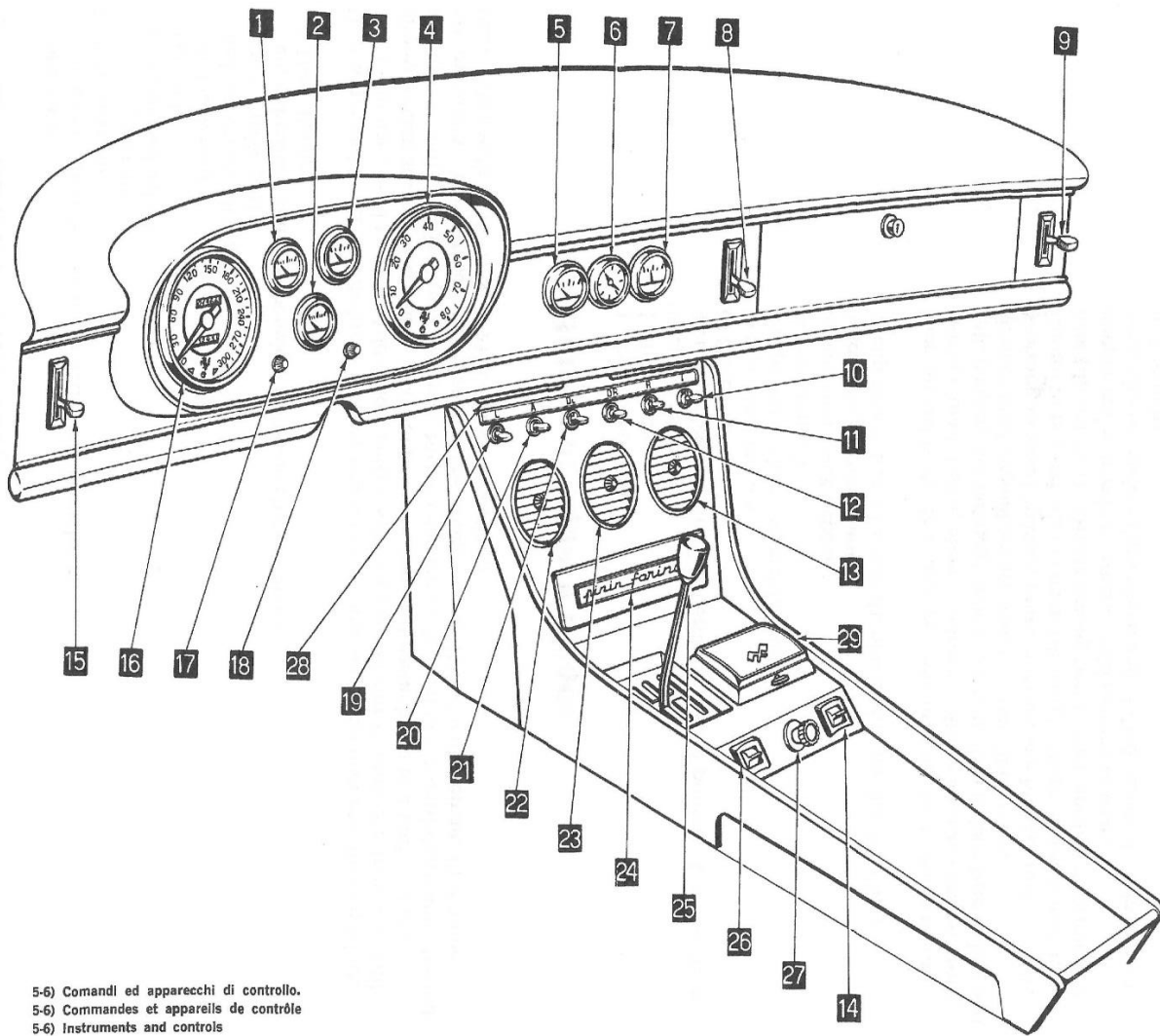
18) Right angle batter cable connector



18) Copper ground strap



19) Black cloth covered AC hose and Aeroquip connectors



5-6) Comandi ed apparecchi di controllo.
 5-6) Commandes et appareils de contrôle
 5-6) Instruments and controls