

Ferrari Exhaust Systems 1960's

Presented to
IAC/PFA

David Carte

25 January 2018

Table of Contents

| | | | | |
|----------------------------|----|--|----------------------------------|----|
| | | | | |
| Timeline | 3 | | 275 GTB - GTS | 52 |
| | | | 275 GTB 4 | 53 |
| <u>Period Cars</u> | | | 275 GTB 4 | 55 |
| 1961 250 GT SWB Berlinetta | 4 | | | |
| 1961 400 SA | 5 | | <u>Exhaust Components</u> | |
| 1963 250 GT/ "Lusso" | 11 | | Abarth GT 250 SWB Competizione | 56 |
| 1964 275 GTB Short nose | 14 | | Abarth Original tip PF Coupe | 60 |
| 1964 275 GTS "Early" | 17 | | Abarth Original muffler Lusso | 61 |
| 1965 275 GTS | 18 | | Abarth SWB "late road car" | 63 |
| 1966 330 GT 2+2 Series II | 20 | | Abarth GTE SN 4843 GT | 64 |
| 1966 330 GTC early | 23 | | Abarth PF Cab II | 68 |
| 1966 330 GTC | 24 | | Abarth Center muffler 02985 | 70 |
| 1967 275 GTB/4 | 25 | | Abarth tip 02985 GT | 71 |
| 1967 275 GTB/4* S NART | 28 | | Abarth muffler GTE | 72 |
| 1967 330 GTC Speciale | 32 | | Ceretto 275 GTB 2-Cam | 73 |
| 1967 330 GTS | 38 | | Spacem 275 GTB/S | 74 |
| 1968 365 GTS | 40 | | Spacem 275 GTB/S | 75 |
| 1968 365 GT 2+2 | 41 | | Ceretto? 275 GTB/4 exhaust | 76 |
| 1968 365 GTC | 42 | | Abarth 330 2+2 SN 05701 tips | 77 |
| 1968 GTS | 44 | | Ceretto? 365 Cal Spyder | 82 |
| | | | Ceretto 365 Cal Spyder late | 83 |
| <u>Drawings</u> | | | Galletti 365 GTC – 6 small tubes | 84 |
| SWB/California Spyder | 45 | | Abarth tips with decal | 85 |
| 250 GTE | 46 | | Assorted tips | 86 |
| Early SWB Berlinetta 1960 | 47 | | Ceretto "old stock" 330 2+2 | 90 |
| 250 GTE Manual 27 | 48 | | Ceretto sticker | 91 |
| 330 2+2 pre 1965 | 49 | | Ceretto "new old stock" | 93 |
| 330 2+2 post 1965 | 50 | | | |
| 275 GTB - S | 51 | | Aftermarket Ferrari Suppliers | 95 |
| | | | Acknowledgements | 96 |

Ferrari Exhaust Component Timeline

Abarth: “Exclusively” until 1964

- Last 275 GTB with Abarth 06643

Spacem: Starting in 1964, “Exclusively” to Mid 1966

- Last Known car 08619 GTB

Ceretto: Earliest known mid- 5/1966 330 2+2 08485

- Last known 275 GTB S/N 08891 Ceretto 8/66

- Last known 330 GTC S/N 10787 Ceretto 9/67

After S/N 10787, no designation from manufacturer on build sheets.

1961 250 GT SWB Berlinetta



S/N: 02917 GT

Comment:
Paris Auto Show

Make: Abarth Competizione

Finish: Black

1961 400 SA



S/N: 02373 SA

Comment:
Geneva Auto Salon

Make: Abarth
Finish: Black

1961 400 SA



S/N: 02373 SA

Comment:
Geneva Auto Salon

Make: Abarth

Finish: Black

1961 400 SA



S/N: 02373 SA

Comment:
Geneva Auto Salon

Make: Abarth
Finish: Black

1961 400 SA



☆ 2 0

S/N: 02809 SA

Comment:
Factory Photo Modena Courtyard

Make: Abarth
Finish: Black

1962 400 SA



S/N: 03747 SA

Comment:
Sebring 1963

Make: Abarth
Finish: Silver

1962 400 SA



S/N: 03747 SA

Comment:
Sebring 1963

Make: Abarth

Finish: Silver

1963 250 GT/ "Lusso"



S/N: 03849 GT

Comment:
Paris Auto Salon 1963

Make: Abarth
Finish: Black + Abarth Decal

1963 250 GT/ "Lusso"



S/N: 03849 GT

Comment:
Paris Auto Salon 1963

Make: Abarth
Finish: Black + Abarth Decal

1963 250 GT/ "Lusso"

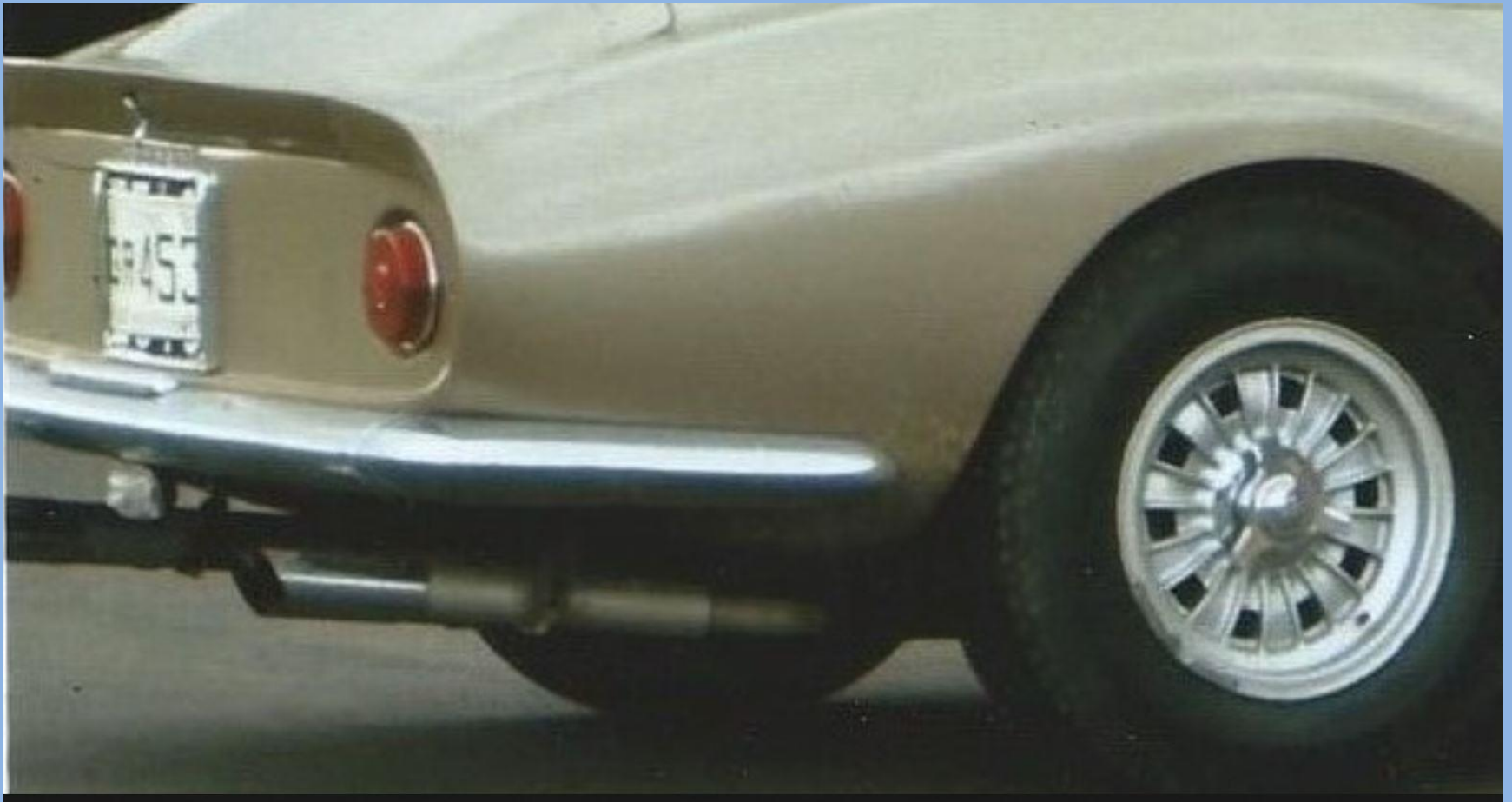


S/N: 03849 GT

Comment:
Paris Auto Salon 1963

Make: Abarth
Finish: Black + Abarth decal

1964 275 GTB Short nose



S/N: 06617 GTB

Comment:

Make: Complessivo 213 Spacem

Finish: Silver

1964 275 GTB Short nose



S/N: 06617 GTB

Comment:

Make: Complessivo 213 Spacem

Finish: Silver

1964 275 GTB Short nose



S/N: 06449 GTB

Comment:
Paris Auto Salon

Make: Abarth
Finish: Black

1964 275 GTS "Early"



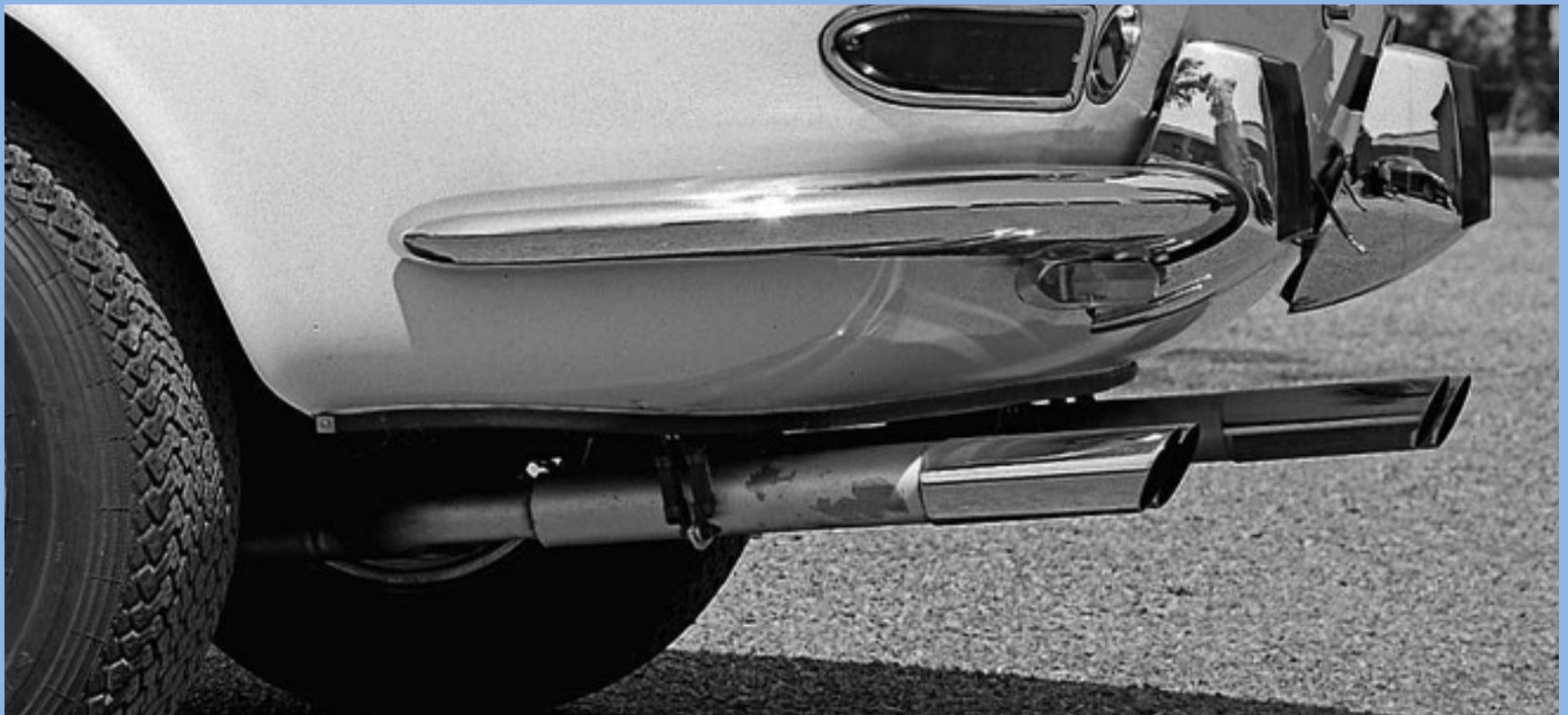
S/N: 06315 GTS

Comment:
Paris Auto Salon

Make: ?

Finish: ?

1965 275 GTS



S/N: unknown

Comment:
Modena Courtyard

Make: Spacem 213/20286

Finish: Silver

1965 275 GTS



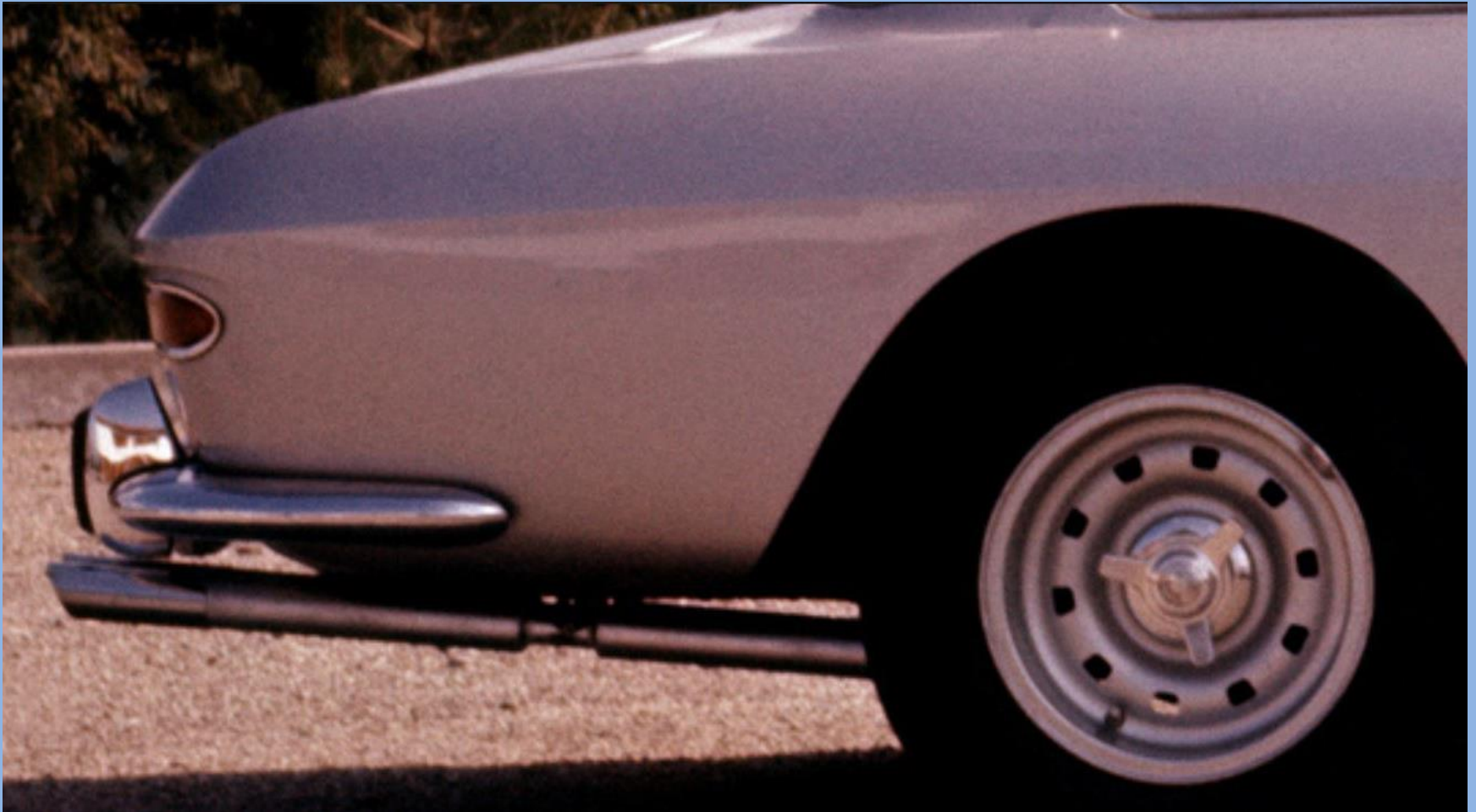
S/N: unknown

Comment:
Modena Courtyard

Make: Spacem 213/20286

Finish: Silver

1966 330 GT 2+2 Series II



S/N: unknown

Comment:
Factory photo Modena Courtyard

Make: Spacem 209/20280

Finish: Silver

1966 330 GT 2+2 Series II



S/N: unknown

Comment:
Factory photo Modena Courtyard

Make: Spacem 209/20280

Finish: Silver

1966 330 GT 2+2 Series II



S/N: unknown

Comment:
Factory photo Modena Courtyard

Make: Spacem 209/20280

Finish: Silver

1966 330 GTC early



S/N: UNKNOWN

Comment: Mufflers appear same
as 275 GTS Ceretto tip

Make: ?

Finish: Silver

1966 330 GTC



S/N: unknown

Comment:
Factory photo

Make: 209/20329 Galletti 209/20331

Finish: Silver

1967 275 GTB/4



S/N: 10103 GTB/4

Comment:
Car show 1970's

Make: ? 226/20349

Finish: Silver

1967 275 GTB/4



S/N: unknown

Comment:
Factory photo – Homologation sheets

Make: ? 226/20349

Finish: Silver

1967 275 GTB/4



S/N: unknown

Comment:
Factory photo – Homologation sheets

Make: ? 226/20349

Finish: Silver

1967 275 GTB/4* S NART



S/N: 09751 GTB/4*
S NART

Comment:
Photo 1968 New York

Make: Ceretto
Finish: Black with decal

1967 275 GTB/4* S NART



S/N: 09751 GTB/4*
S NART

Comment:
Photo 1968 New York

Make: Ceretto
Finish: Black with decal

1967 275 GTB/4* S NART

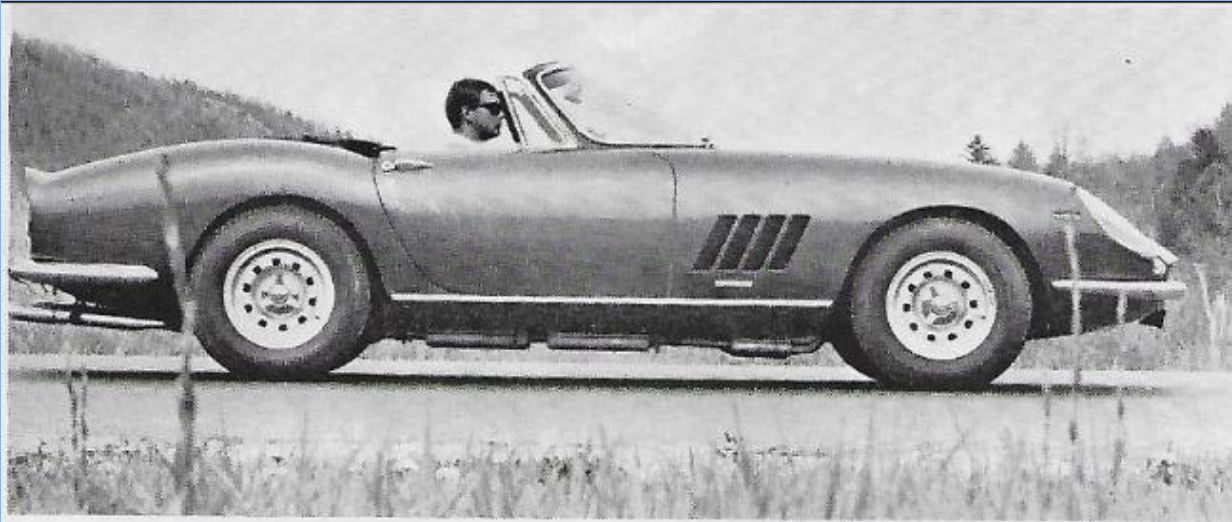


S/N: 09751 GTB/4*
S NART

Comment:
Photo 1968 New York

Make: Ceretto
Finish: Black with decal

1967 275 GTB/4* S NART



S/N: 09437 GTB/4*
S NART

Comment:
Road and Track 1967

Make: ?
Finish: Silver

1967 330 GTC Speciale



S/N: 09439 GT

Comment:
Factory studio photo

Make: Ceretto 209/20331

Finish: Black with decal

1967 330 GTC Speciale



S/N: 09439 GT

Comment:
Factory studio photo

Make: 209329 Galletti 209/20331 Ceretto

Finish: Black with decal "orange in tip"

1967 330 GTC Speciale



S/N: 09439 GT

Comment:
Factory studio photo

Make: 209329 Galletti 209/20331 Ceretto

Finish: Black with decal "orange in tip"

1967 330 GTC Speciale



S/N: 09439 GT

Comment:
Factory studio photo

Make: 209329 Galletti 209/20331 Ceretto

Finish: Black with decal "orange in tip"

1967 330 GTC Speciale

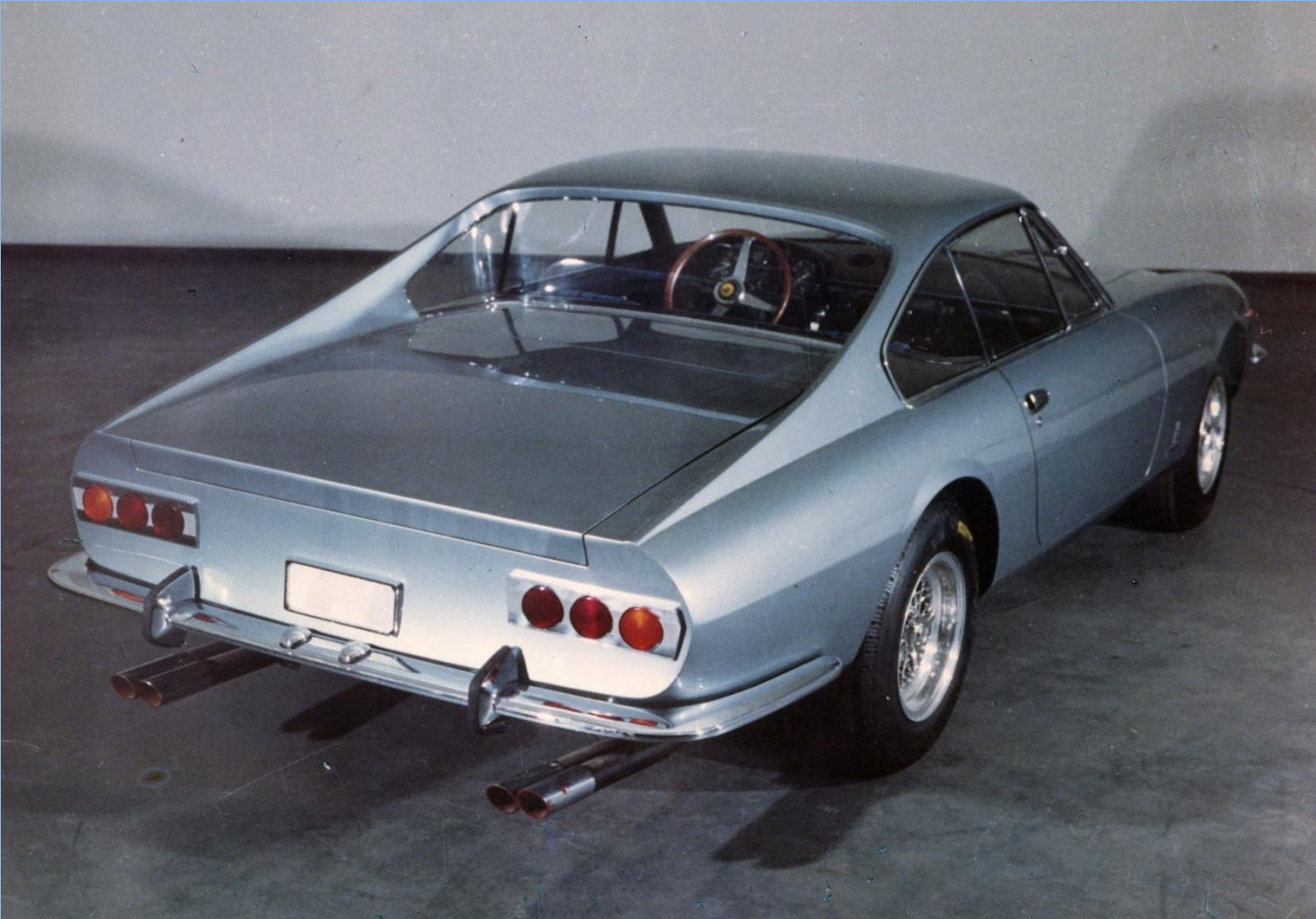


S/N: 09439 GT

Comment:
Factory studio photo

Make: 209/20329 Galletti 209/20331 Ceretto
Finish: Black with decal "orange inside tip"

1967 330 GTC Speciale

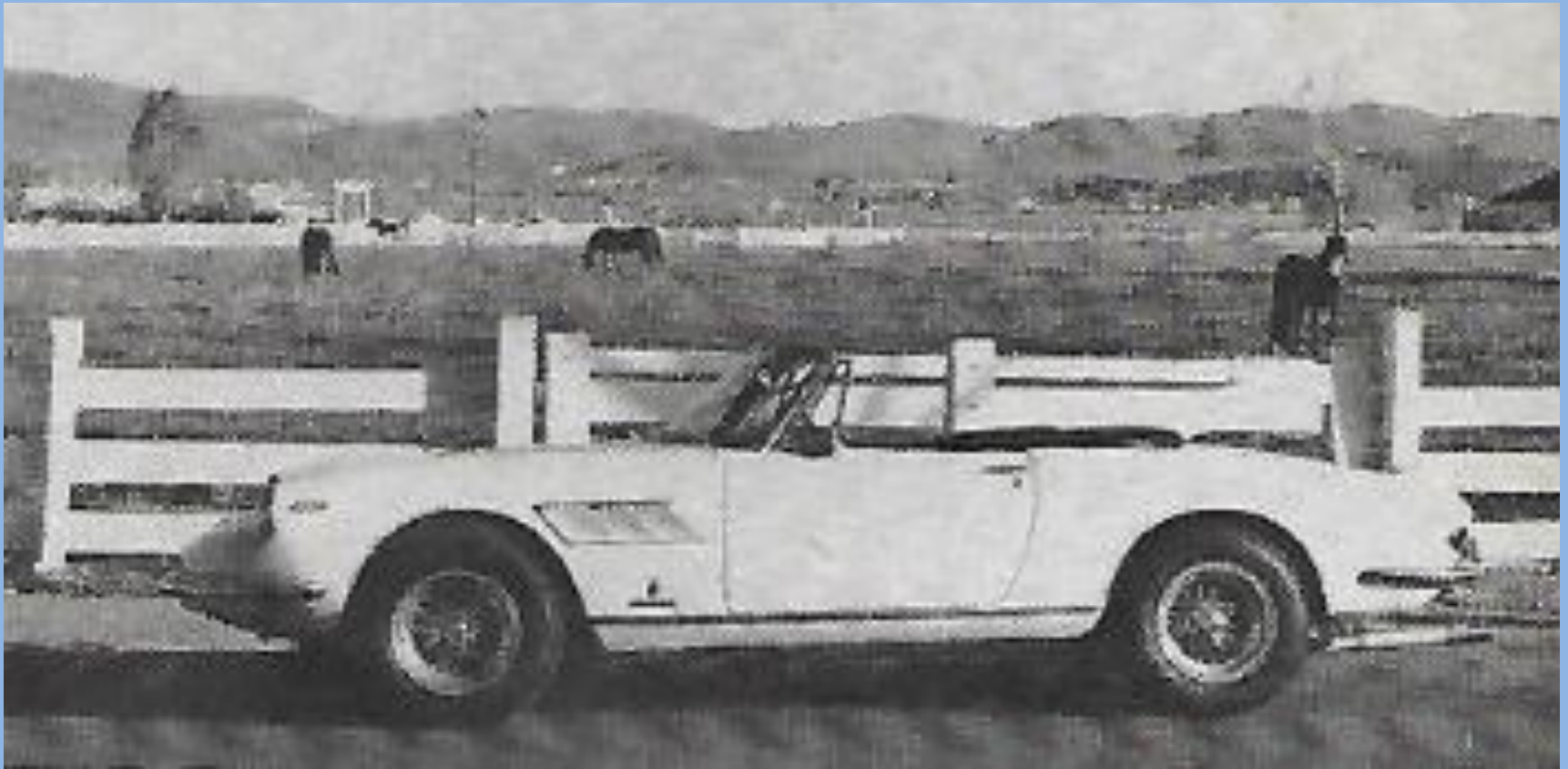


S/N: 09439 GT

Comment:
Factory studio photo

Make: 209/20329 Galletti 209/20331 Ceretto
Finish: Black + decal "orange inside tip"

1967 330 GTS



S/N: unknown

Comment:
Road and Track magazine 8-68

Make: 209/20329 Galletti 209/20331 Ceretto
Finish: Silver

1967 330 GTS



S/N: unknown

Comment:
Road and Track magazine 8-68

Make: 209/20329 Galletti 209/20331 Ceretto
Finish: Silver

1968 365 GTS



S/N: unknown

Comment:
Factory photo

Make: ?

Finish: Black with decal

1968 365 GT 2+2



S/N: unknown

Comment:
Factory photo

Make: ? 245/20387

Finish: Black with decal

1968 365 GTC



S/N: unknown

Comment:
Period photo

Make: Ceretto tip

Finish: black

1968 365 GTC



S/N: unknown

Comment:
Period photo

Make: ? Ceretto tip with decal

Finish: ? black

1968 GTS



S/N: unknown

Comment:
Period photo

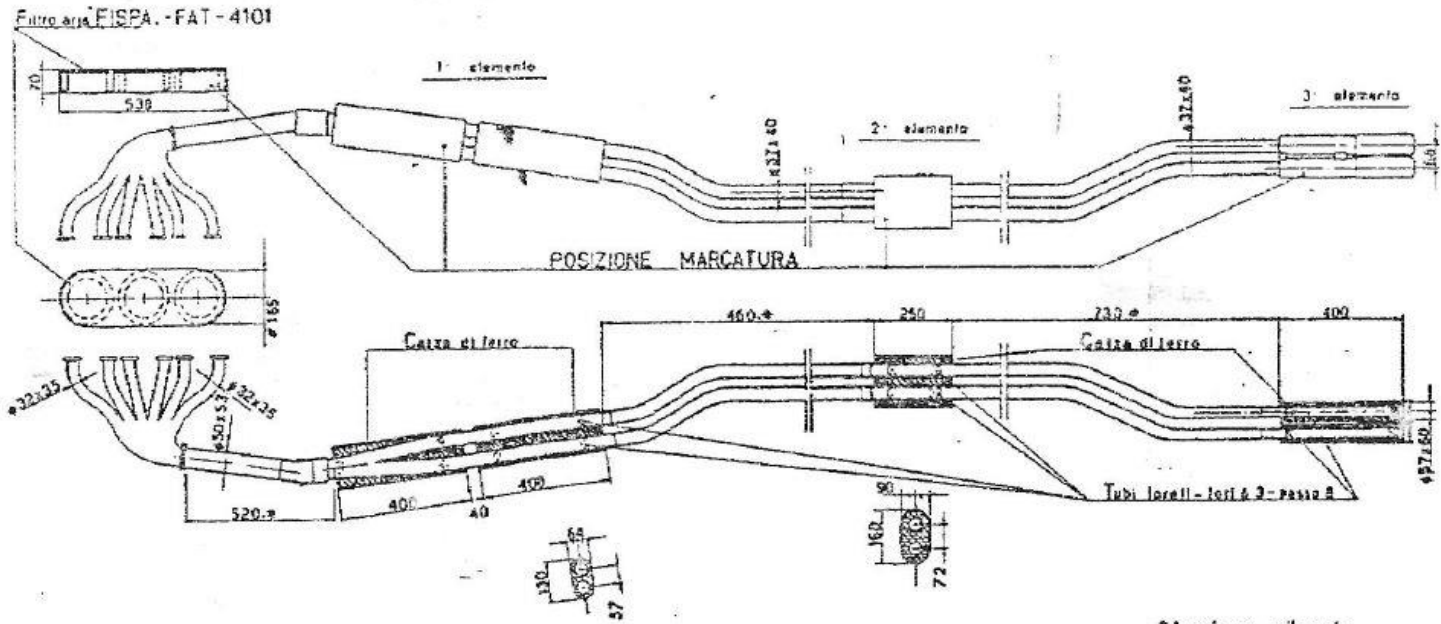
Make: ?

Finish: Black with decal

DISPOSITIVO SILENZIATORE

Approvato dal Ministero dei Trasporti - Ispettorato Generale Motorizzazione Civile

Certificato n. 2131 S in data 7-7-1961



Marchatura silenziatore scarico - Ferrari - IGM 2115 AS - Ferrari - IGM 2115 BS - Ferrari - IGM 2115 CS

1° elemento

2° elemento

3° elemento

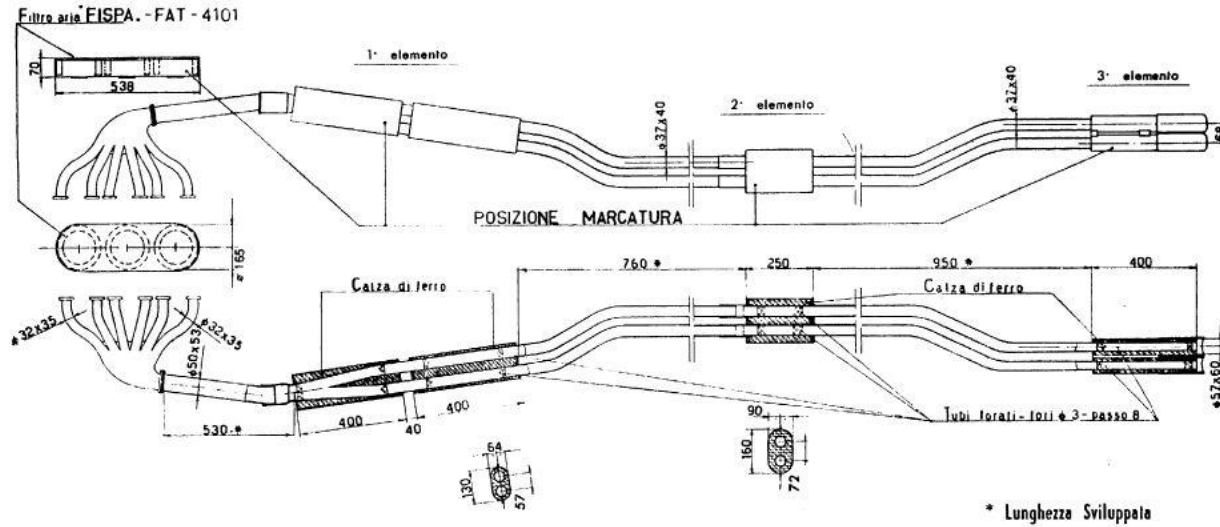
Marchatura silenziatore aspirazione - Ferrari - IGM 2115 S

Model: SWB/California Spyder

S/N:

DISPOSITIVO SILENZIATORE

Approvato dal Ministero dei Trasporti - Ispettorato Generale Motorizzazione Civile
Certificato n. 2127 S in data 5-7-1961



Marchatura silenziatore scarico - **Ferrari - IGM 2115 AS - Ferrari - IGM 2115 BS - Ferrari - IGM 2115 CS**

1° elemento

2° elemento

3° elemento

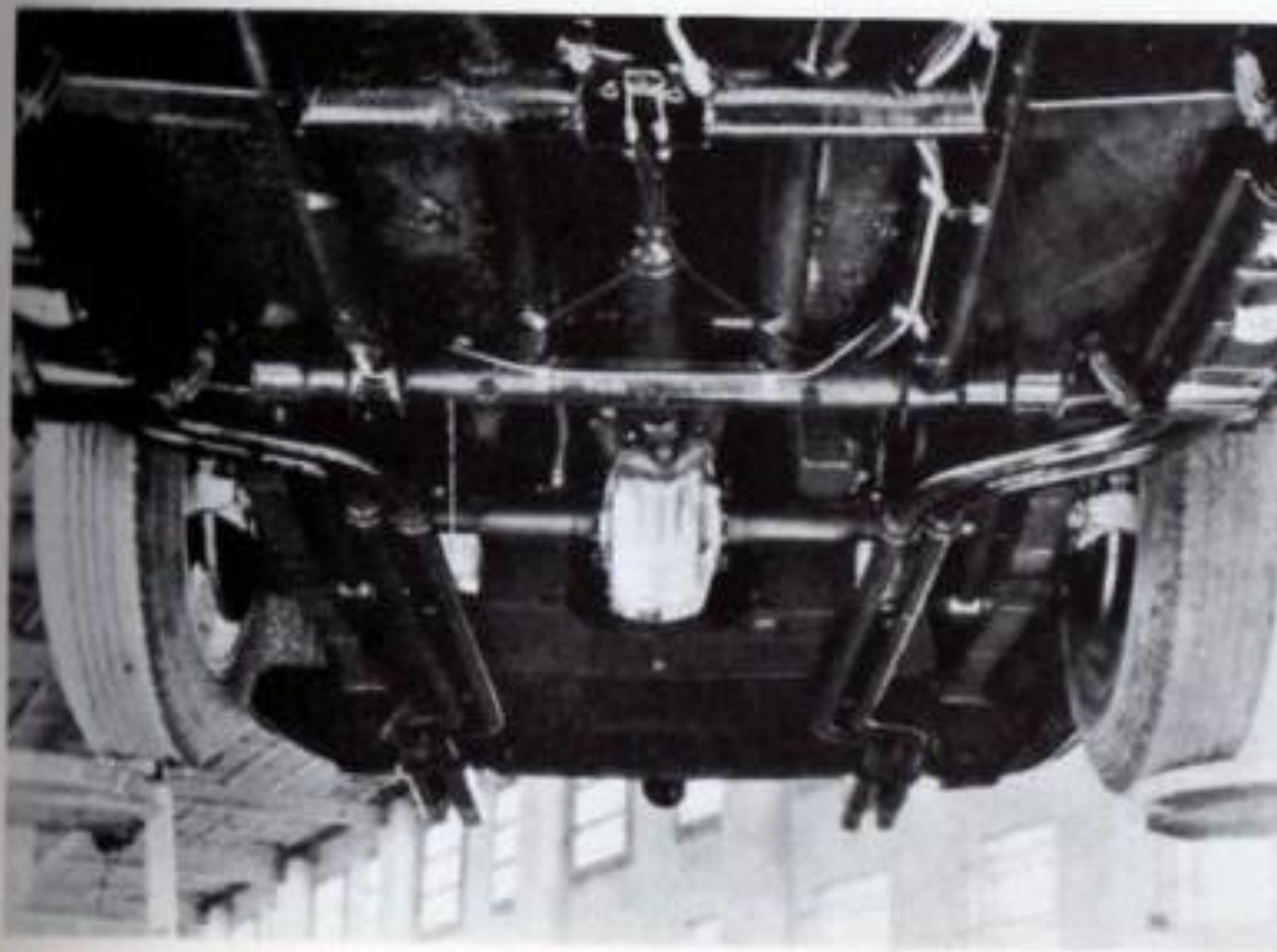
Marchatura silenziatore aspirazione - **Ferrari - IGM 2115 S**

Valori di controllo } giri /1': 7000
 } silenziatore usato: dB 85

Valori rilevati a veicolo nuovo: a veicolo fermo dB 83 ; a veicolo in moto dB 91

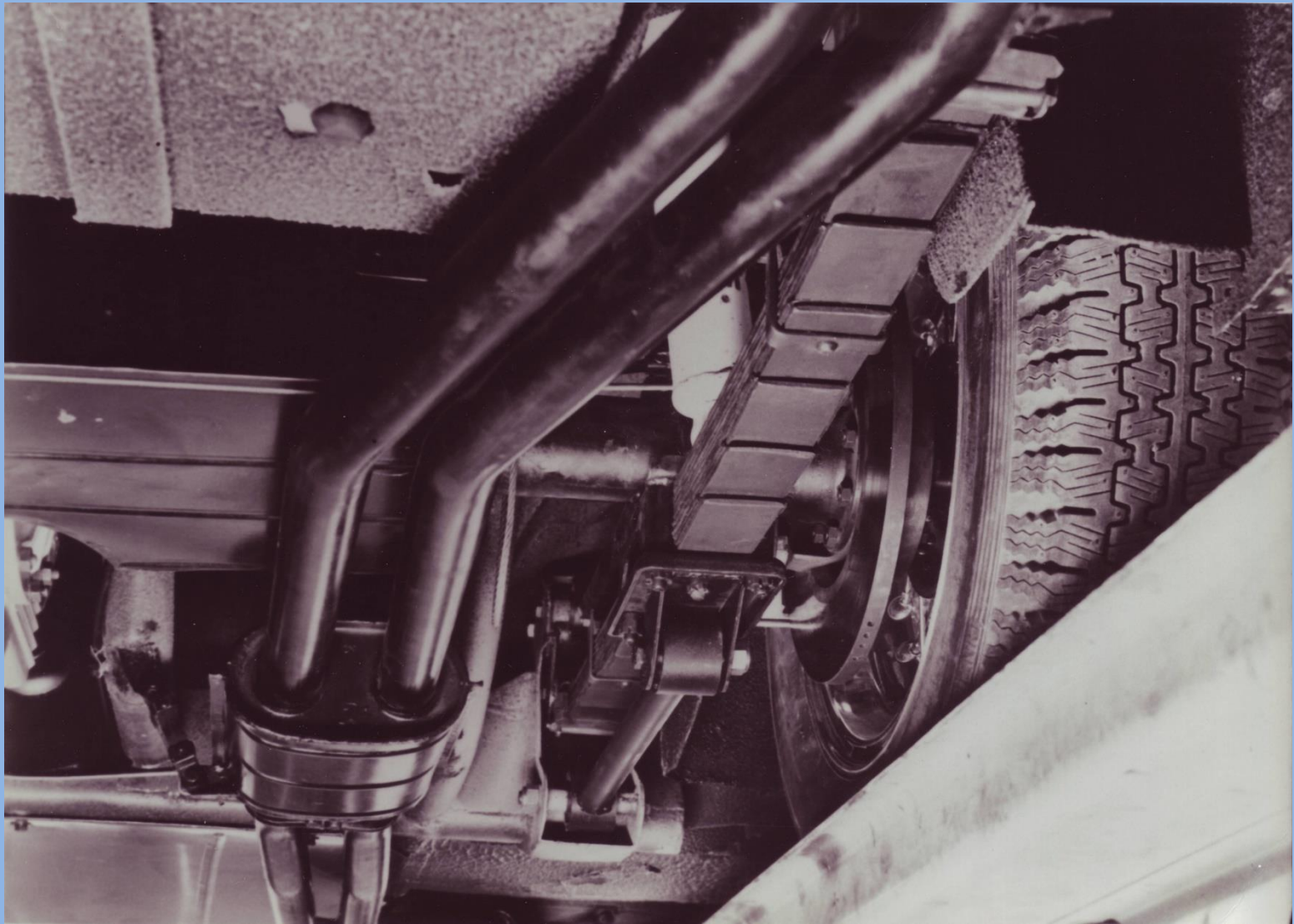
Model: 250 GTE

S/N:



Model: Early SWB Berlinetta 1960

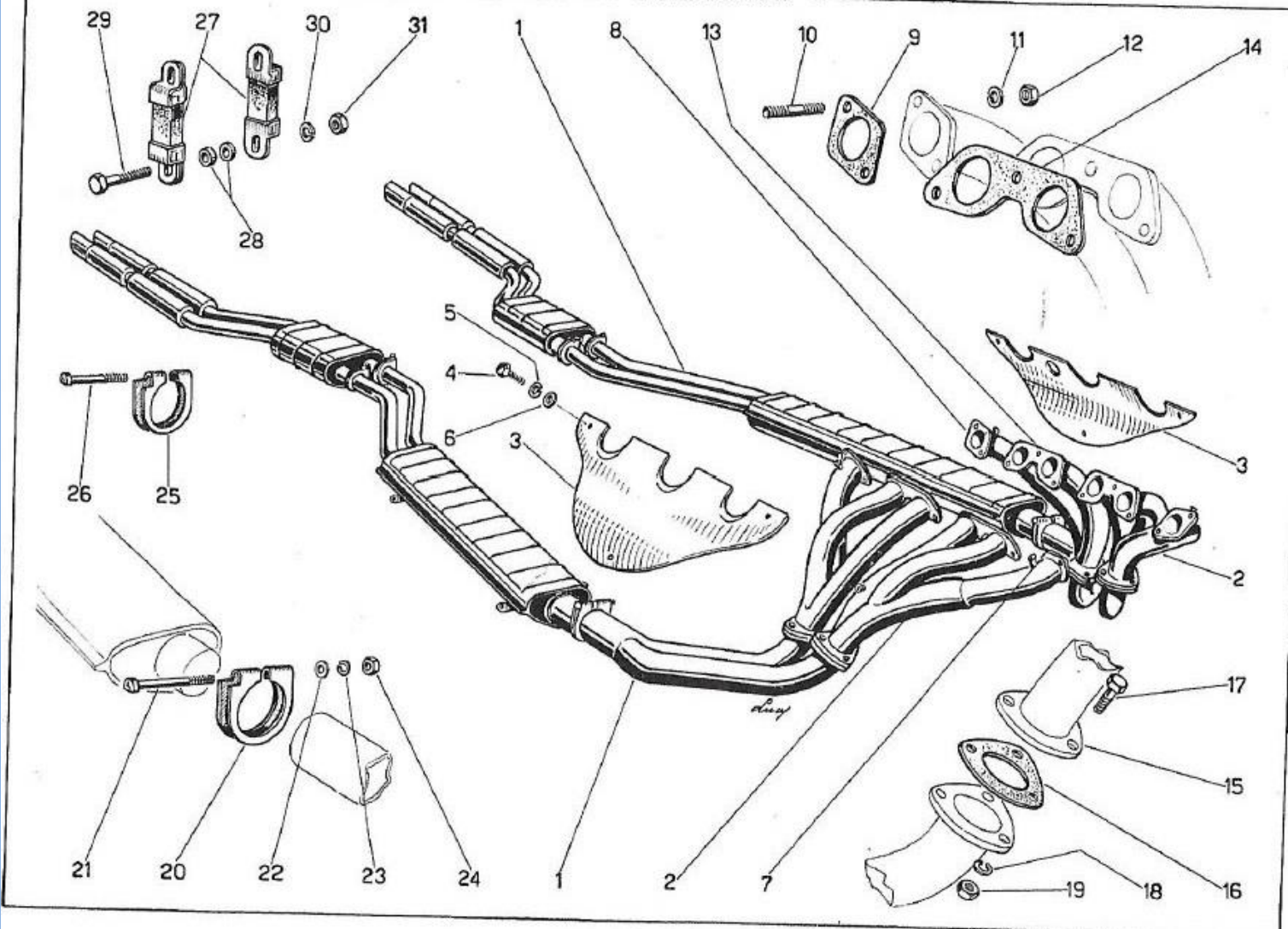
S/N:



Model: 250 GTE Manual 27

S/N:

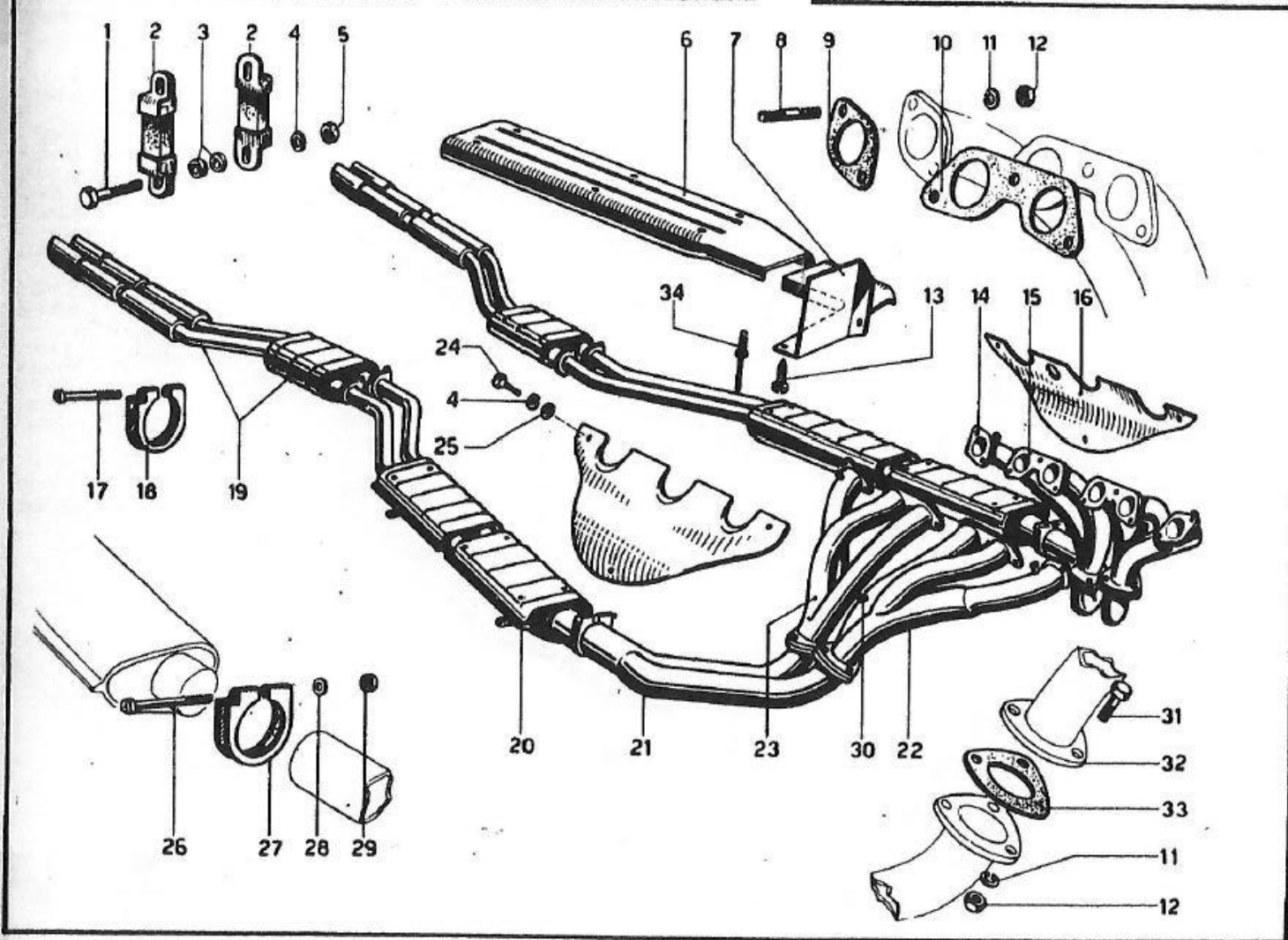
TAV. 9 - COLLETTORI SCARICO - SILENZIATORI E PROLUNGHE



Model: 330 2+2 pre 1965

S/N:

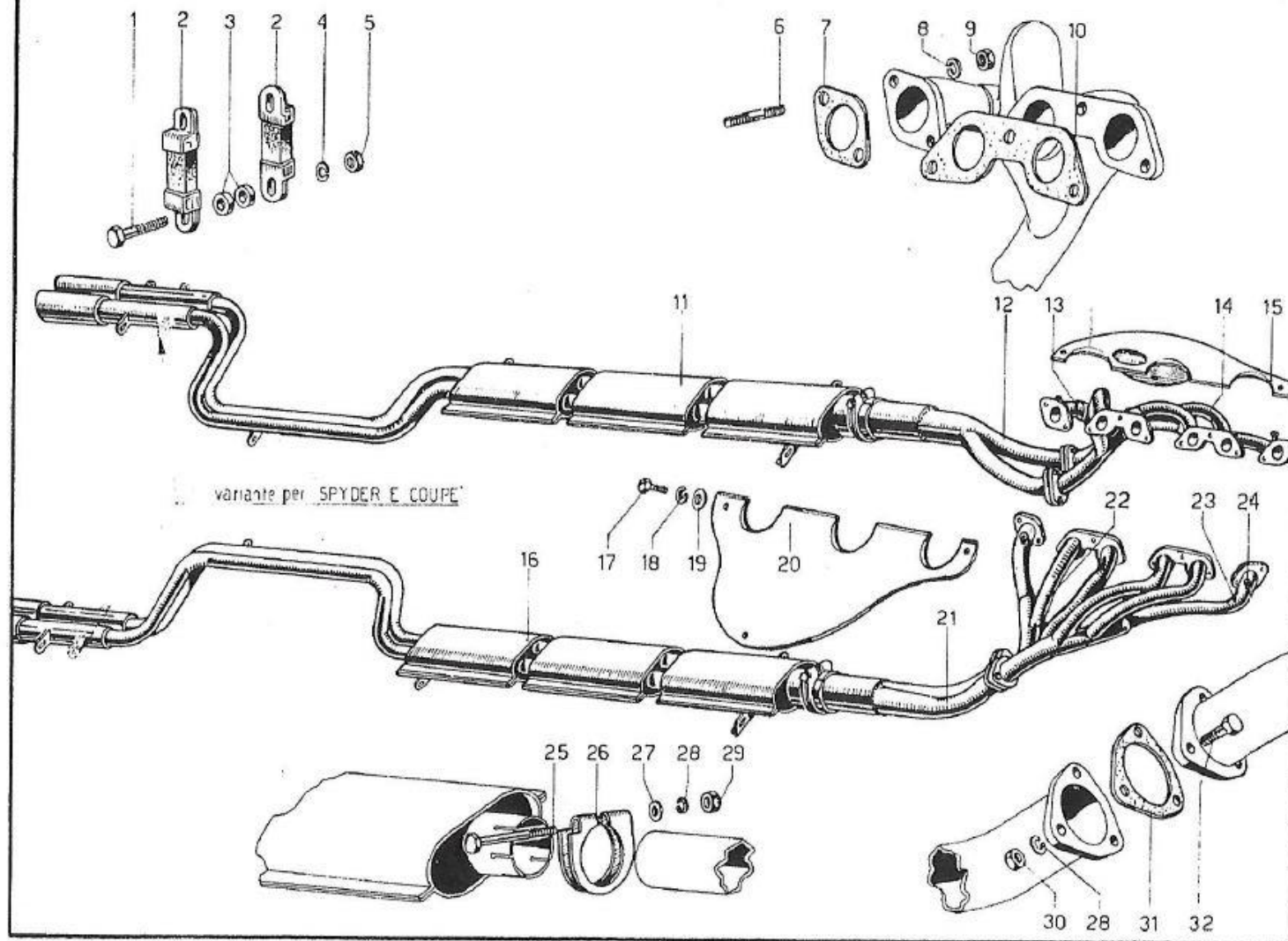
TAV. 8 - COLLETTORI SCARICO - SILENZIATORI E PROLUNGHE



Model: 330 2+2 post 1965

S/N:

TAV. 8 - COLLETTORI SCARICO SILENZIATORI E PROLUNGHE

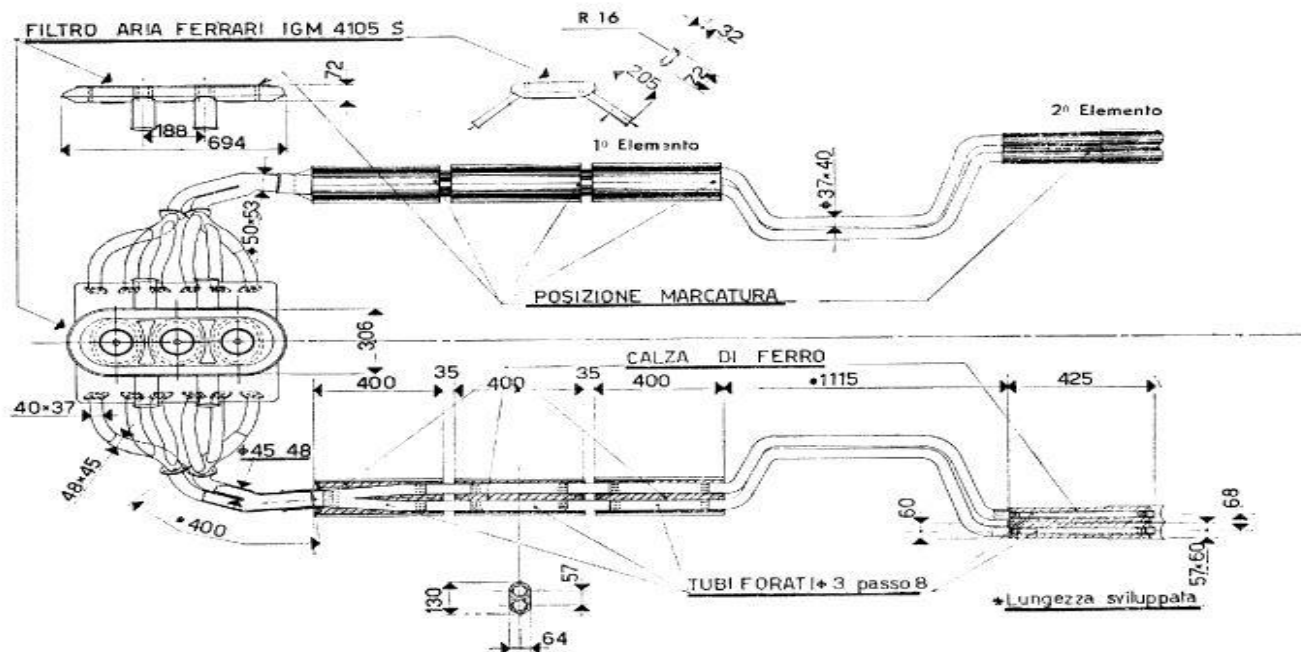


Model: 275 GTB - S

S/N:

DISPOSITIVI SILENZIATORI DI ASPIRAZIONE E DI SCARICO

Approvato dal Ministero dei Trasporti e dell'Aviazione Civile - Ispettorato Generale Motorizzazione Civile
Certificato n. **4105 S** in data **24 - 5 - 1965**



Marcatura silenziatore scarico - **Ferrari - IGM 4105 AS - Ferrari IGM 4105 BS**
1° elemento 2° elemento

Marcatura silenziatore aspirazione - **Ferrari - IGM 4105 S**

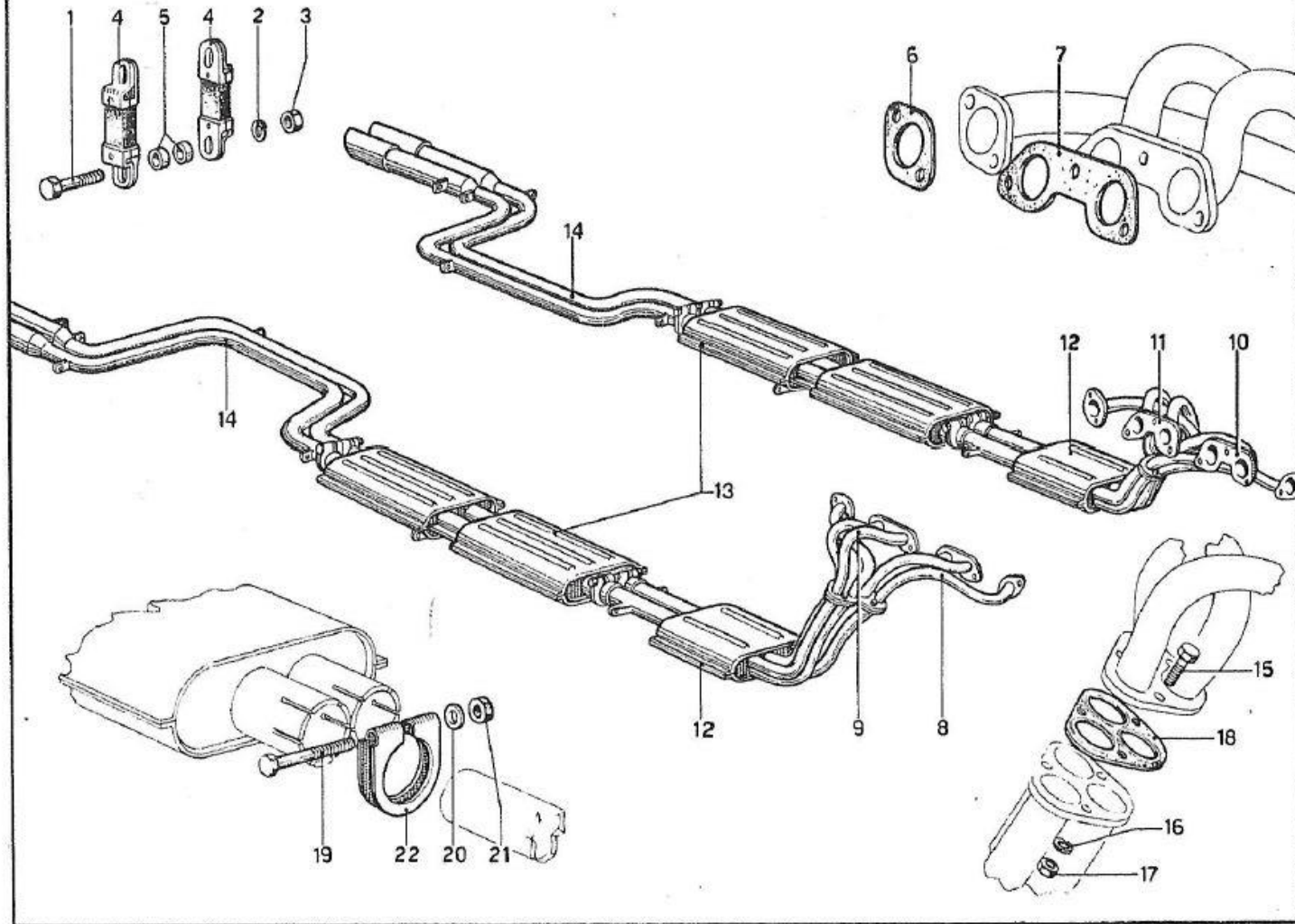
Valori di controllo { giri /1' : 7000
silenziatore usato : dB 90

Valori rilevati a veicolo nuovo : a veicolo fermo dB 86,5; a veicolo in moto dB 90,2

Model: 275 GTB - GTS

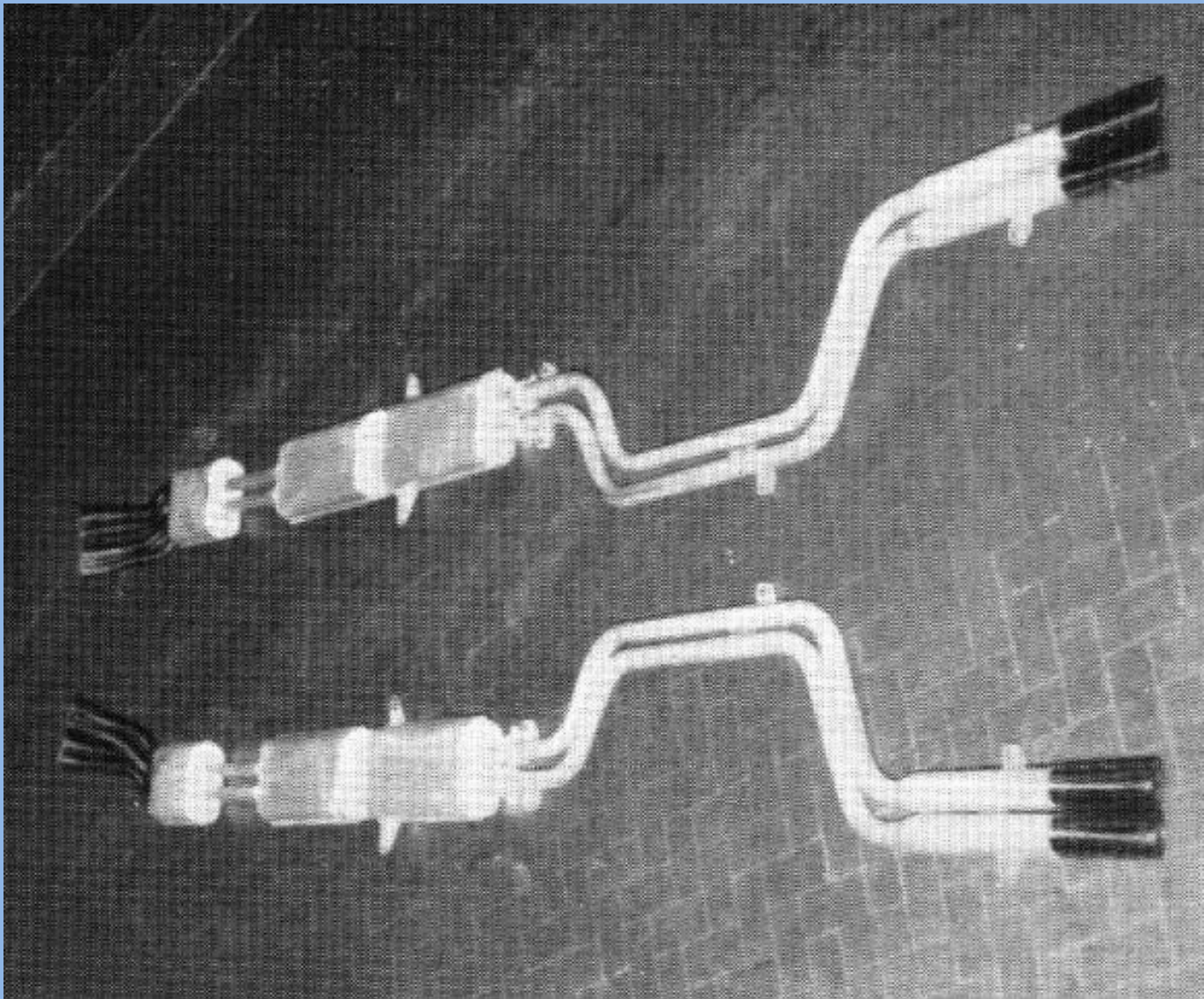
S/N:

TAV. 10 - IMPIANTO SCARICO



Model: 275 GTB 4

S/N:

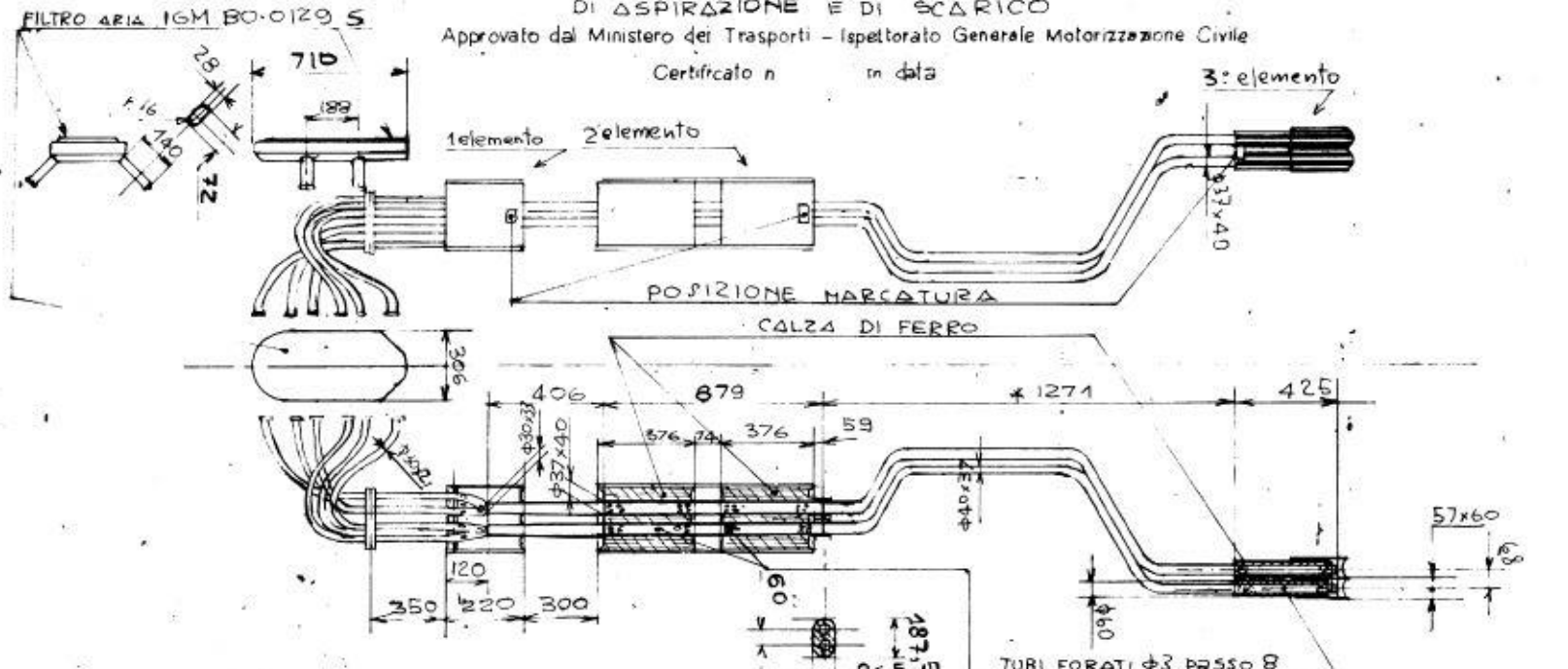


Model: 275 GTB 4 homologation

S/N:

DISPOSITIVI SILENZIATORI

DI ASPIRAZIONE E DI SCARICO
 Approvato dal Ministero dei Trasporti - Ispettorato Generale Motorizzazione Civile
 Certificato n. in data



Marcatura silenziatore scarico - Ferrari - IGM BO-0126 S
 Marcatura silenziatore aspirazione Ferrari - IGM BO-0129 S
 1° elemento 2° elemento 3° elemento

Ferrari - IGM BO-0127 S
 FERRARI-IGM. BO 0128 S

PROVVISORIA
 PROVVISORIA

* LUNGHEZZA SV

Valori di controllo } giri / p : 7200
 silenziatore usato: dB 88

Valori rilevati e verificati presso il veicolo fermo dB 85 ...

| | |
|-----------------------|------|
| Model: 275 GTB 4 | S/N: |
|-----------------------|------|



Model: Abarth GT 250 SWB Competizione - Black

S/N: 2389 GT



Model: GT 250 SWB Abarth Competizione - Black

S/N: 2389



Model: GT 250 SWB Abarth Competizione - Black

S/N: 2389



Model: GT 250 SWB Abarth Competizione - Black

S/N: 2389



Model: Abarth Original tip PF Coupe Tip 445 mm/
17.5" 36mm tube, smooth black

S/N:

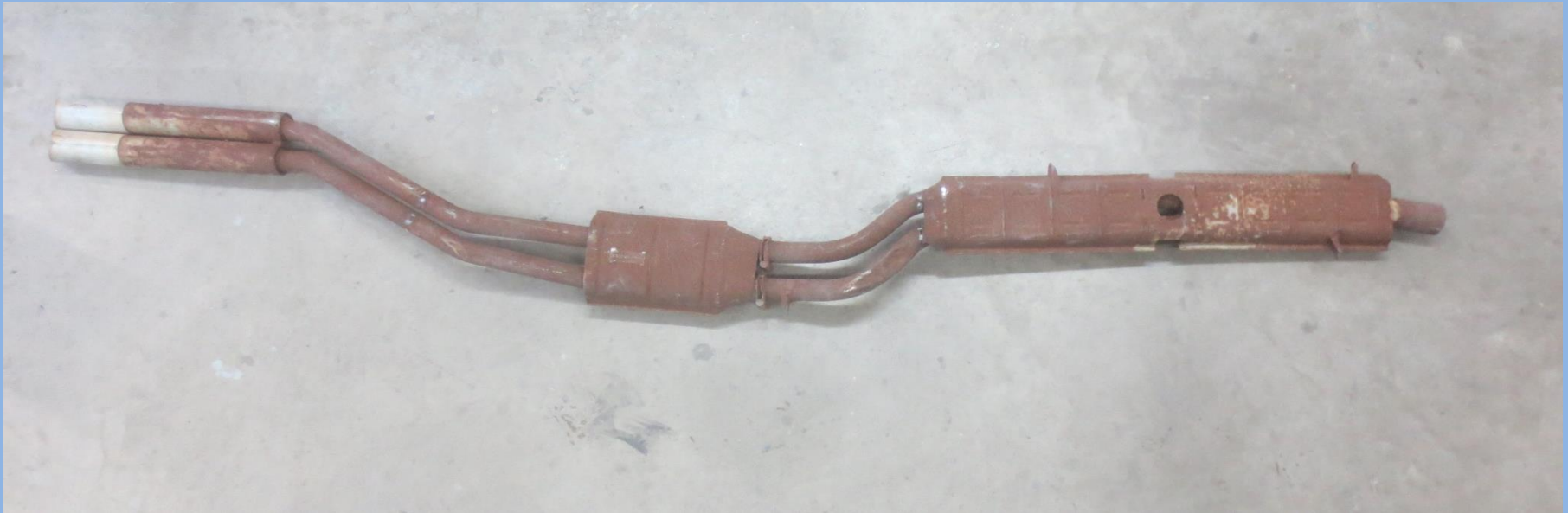


Model: Abarth Original muffler Lusso 5709 GT IGM
2115 AS, smooth black

S/N: 05709 GT



Model: Abarth Original muffer Lusso 05709 GT IGM S/N: 05709 GT
2115 AS, smooth black



Model: Abarth SWB "late road car" 02985 GT Tip
493mm/19 3/8" 36mm tube

S/N: 02985 GT



Model: Abarth GTE SN 4843 GT wrinkle black IGM
2115 BS

S/N: 04843 GT



Model: Abarth GTE SN 4843 GT wrinkle black IGM
2115 CS wrinkle black

S/N: 04843 GT



Model: Abarth GTE SN 4843 GT 493mm/19 3/8"
wrinkle black

S/N: 04843 GT



Model: Abarth GTE SN 4843 GT IGM 2115 wrinkle
black AS

S/N: 04843 GT



Model: Abarth PF Cab II

S/N:



Model: Abarth PF Cab II

S/N:



Model: Abarth Center muffler 02985 GT IGM 2115

S/N: 02985



Model:

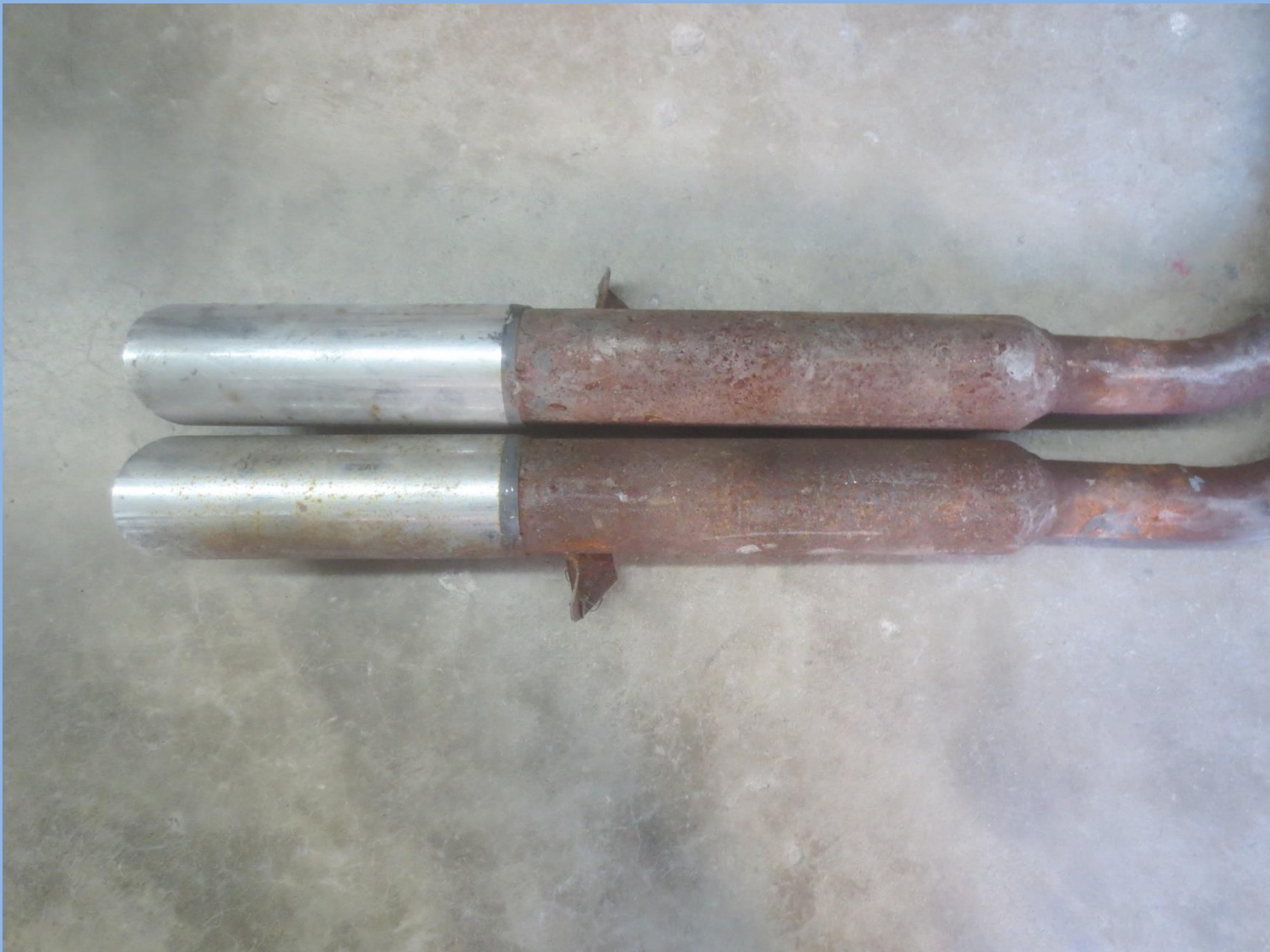
Abarth tip 02985 GT 493mm/19 3/8" "long version"

S/N: 02985 GT



Model: Abarth muffler GTE

S/N:



Model: Ceretto 275 GTB 2-Cam tapered end “chrome slipover is steel and welded on” Ceretto ?

S/N:



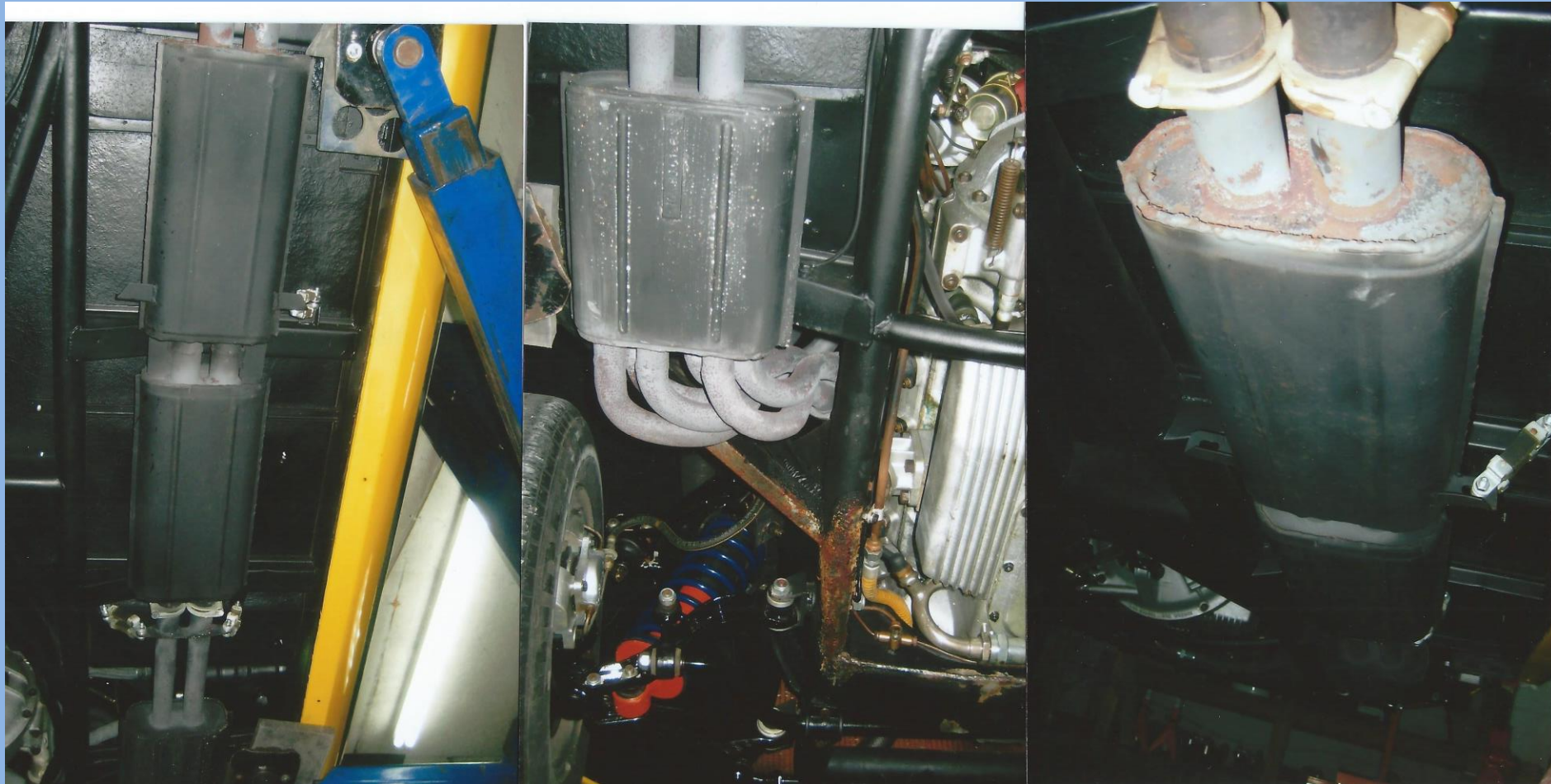
Model: Spacem 275 GTB/S

S/N:



Model: Spacem 275 GTB/S tips 495mm/19 ½" IGM
4105 BS smooth black

S/N:



Model: Ceretto? 275 GTB/4 exhaust "vertical ribs"

S/N:



Model: Abarth 330 2+2 SN 05701 tips

S/N: 05701



Model: Abarth 330 2+2 SN 05701 tips

S/N: 05701



Model: Abarth 330 2+2 SN 05701 tips

S/N: 05701



Model: Abarth 330 2+2 SN 05701 tips

S/N: 05701



Model: Abarth 330 2+2 SN 05701 tips

S/N: 05701



Model: Ceretto ? 365 Cal Spyder – maybe later replacement

S/N:



Model: Ceretto 365 Cal Spyder late

S/N:



Model: Galletti 365 GTC – 6 small tubes

S/N:



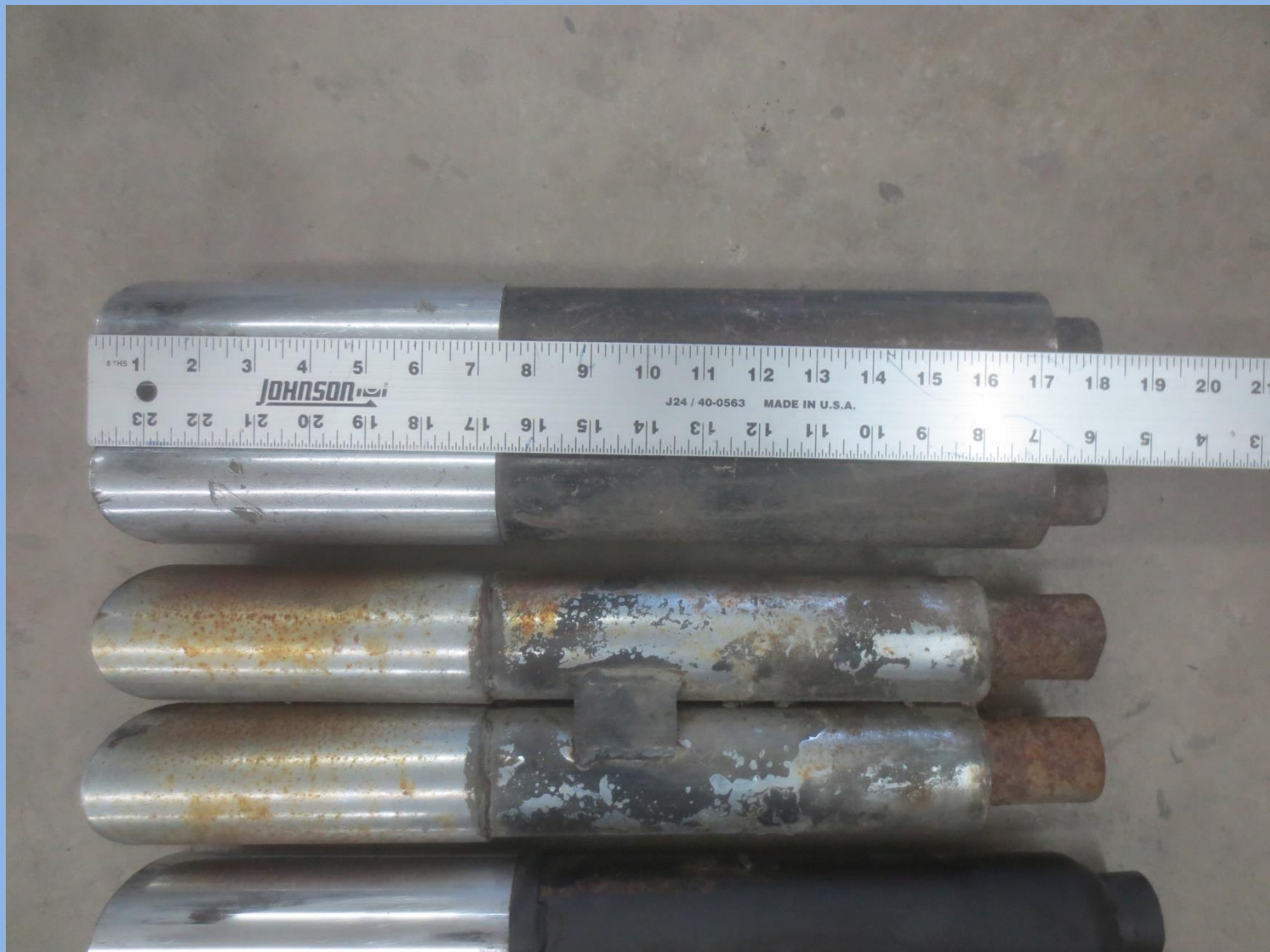
Model: Abarth tips with decal "FAZA 1987 replacements"

S/N:



Model: Assorted old tips Abarth far left, middle
Spacem ?, right Ceretto

S/N:



Model: Assorted old tips Abarth, top – Abarth,
middle – Spacem ?, bottom Ceretto

S/N:



Model: Assorted old tips late Top – Abarth, Middle – S/N:
Spacem, Bottom - Ceretto



Model: Assorted old tips middle. Spacem & Ceretto
show welding method

S/N:



Model: Ceretto old stock late style, silver for 330 2+2, S/N:
500SF, 365...



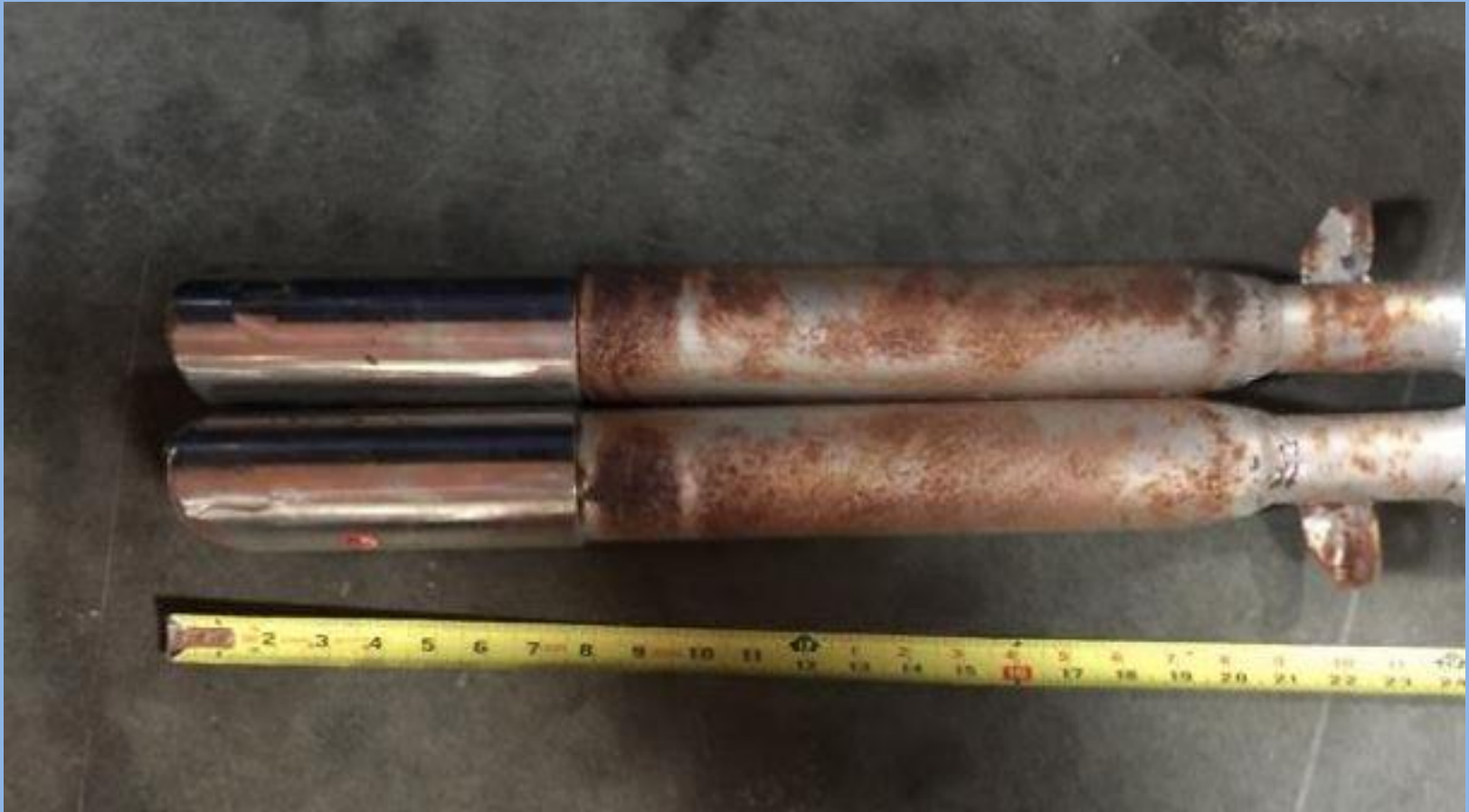
Model: Ceretto sticker

S/N:



Model: Ceretto sticker

S/N:



Model: Ceretto "new old stock"

S/N:



Model: Ceretto "new old stock"

S/N:

Aftermarket Ferrari Suppliers

- Classique Ansa
- Timevalve
- Quicksilver
- Stebro
- Tubi

None of these suppliers systems match OEM.

Acknowledgements

- Marcel Massini – photos
- Greg Jones – GTE photos
- Tom Shaughnessy - photos
- Dustin Wetmore - photos
- Revs Institute – photos
- Ferrari Magazine – flickr photos